

FACTSHEET

SEZ BERLIN

SEZ BERLIN
EVENT LOCATION

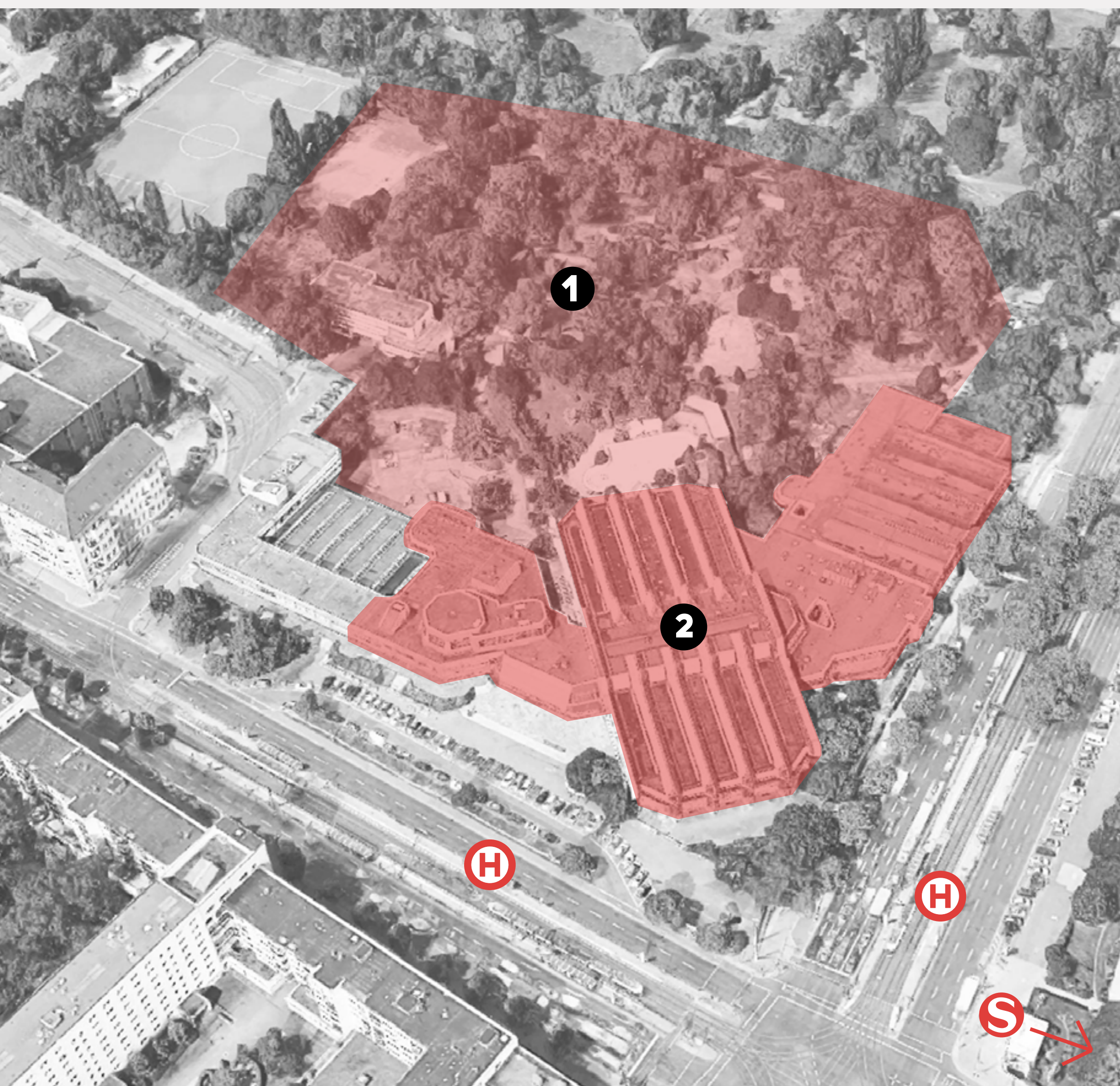
plus.

In the heart of Berlin, the SEZ site covers a total area of approx. total area of about 5 hectares. Due to its size and versatility a creative soul can find everything in the SEZ. The SEZ offers a lot of peace and privacy in the middle of the city.

In keeping with the motto „indoors was yesterday! outdoor areas into the focus. The SEZ Summer Garden with its almost 3 hectares of space is particularly exciting with its pool area, beer garden, „ice field“, outdoor conference and garden areas.

From exhibitions, conferences, trade fairs to seminars, workshops, corporate events to film shoots can be held on our 3 hectares of and about 1 hectare of indoor space, almost every project can be can be realized.

LOCATION STATION



SEZ BERLIN OUTDOOR



SEZ BERLIN INDOOR

S **s41/42 Landsberger Allee** 10 min walk

H **M8 Landsberger Allee/Petersburger Str.** 1 min walk

1 Outdoor event spaces

- approx. 30,000 m² usable area
- partly roofed
- developed gastronomy areas
- areas flexible and combinable
- sanitary facilities
- freely combinable
- several entrances
- Approval must be applied for depending on the type of event
- truck access
- advertising possible

2 Indoor event spaces

- approx. 10,000 m² usable area over 2 floors
- over 4–6 m room height
- areas flexible and combinable
- sanitary facilities
- free seating
- approval must be applied for depending on type of event
- partly heated
- sufficient power connections available
- truck access
- advertising possible

OUTDOOR

SEZ BERLIN

AREA 1-5

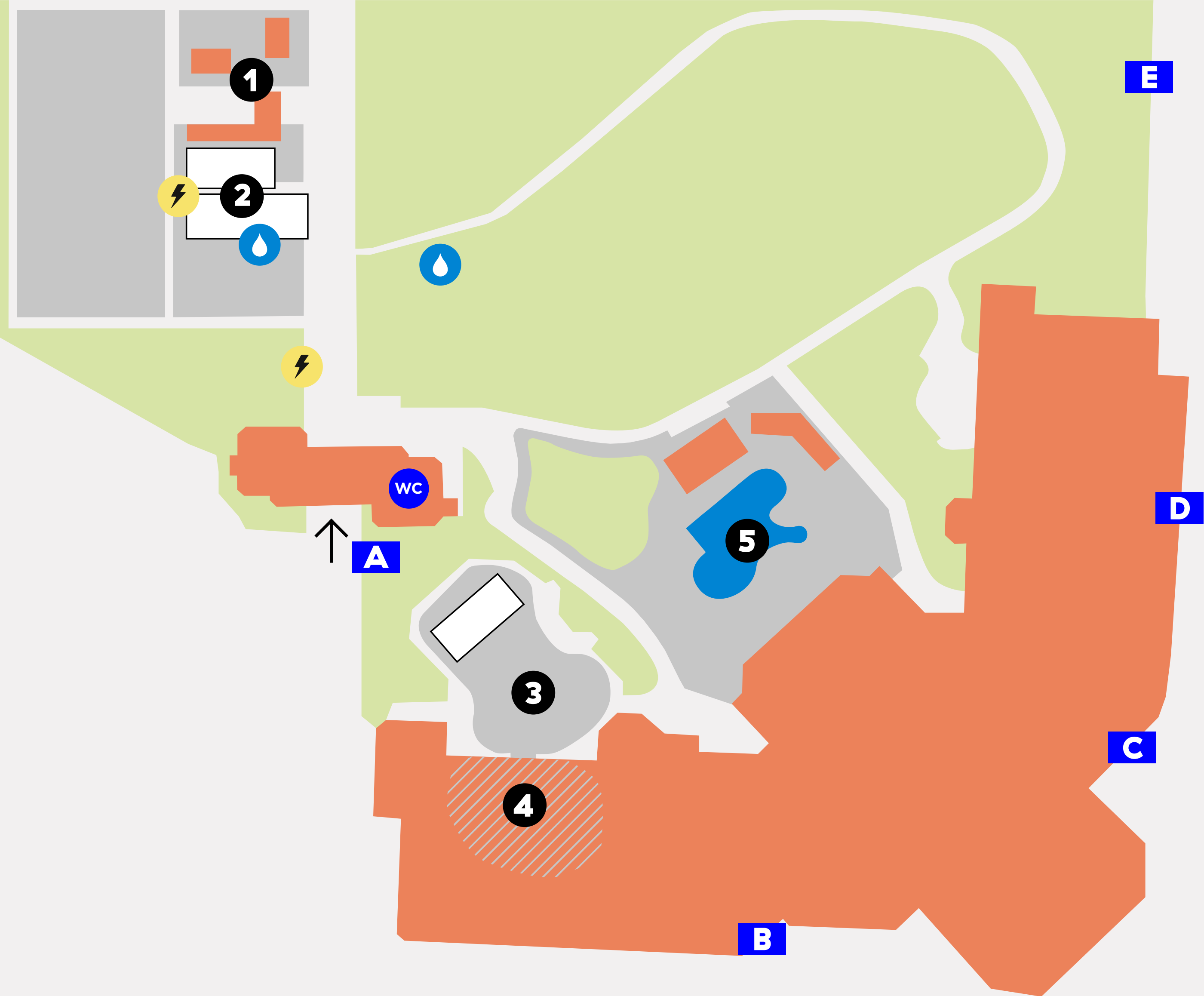
1

–

5

LOCATION OUTDOOR

GENERAL OVERVIEW



Floor plan exterior

-  Green spaces

 SEZ Indoor areas

 Pool

 Temporary event areas
-  16A CEE

 Water connection
- A

Guest entrance & delivery entrance

B

Guest entrance

C

Guest entrance & delivery

D

Guest entrance & delivery

E

Truck & fire department access

1

Beer garden

2

Event tent 1

3

Event tent 2

4

Ice field (roofed)

5

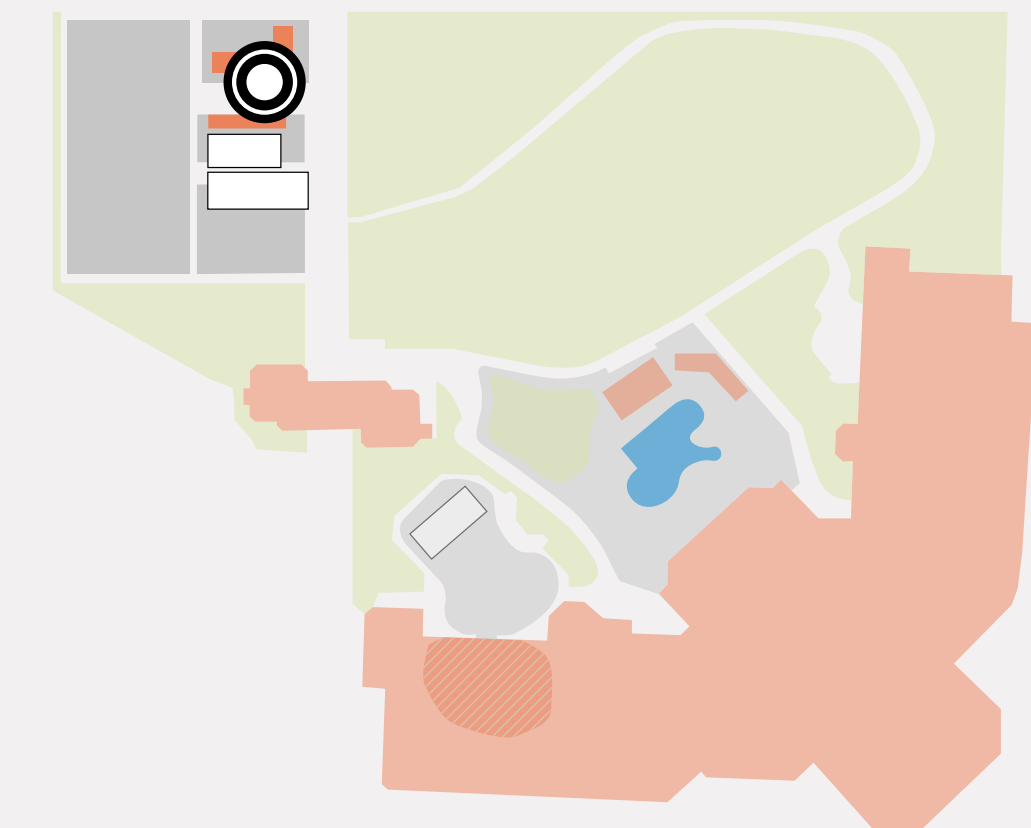
Pool

1 LOCATION OUTDOOR

BEER GARDEN



- area about 1,000 m²
- two covered pavilions
- beverage bar
- preparation kitchen
- partly wooden platform
- campfire place

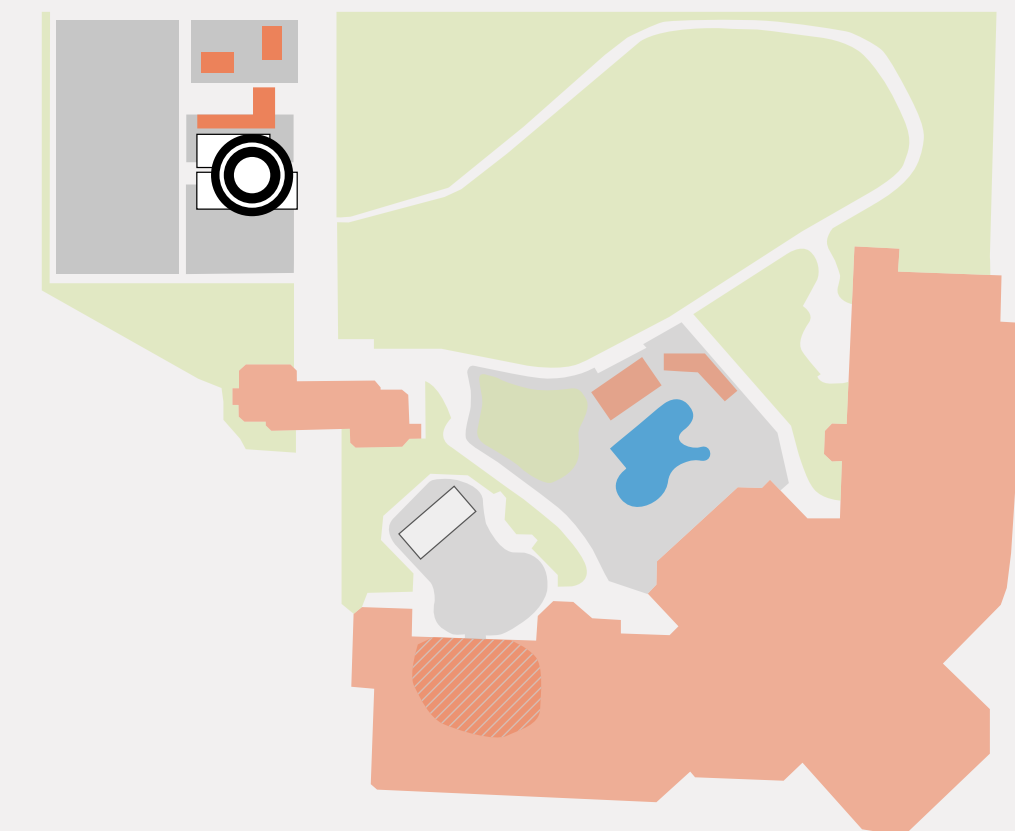


2 | LOCATION OUTDOOR

EVENT TENT 1



- tent area approx. 250 m²
- tent height ca. 3.50 m
- PAX up to approx. 250

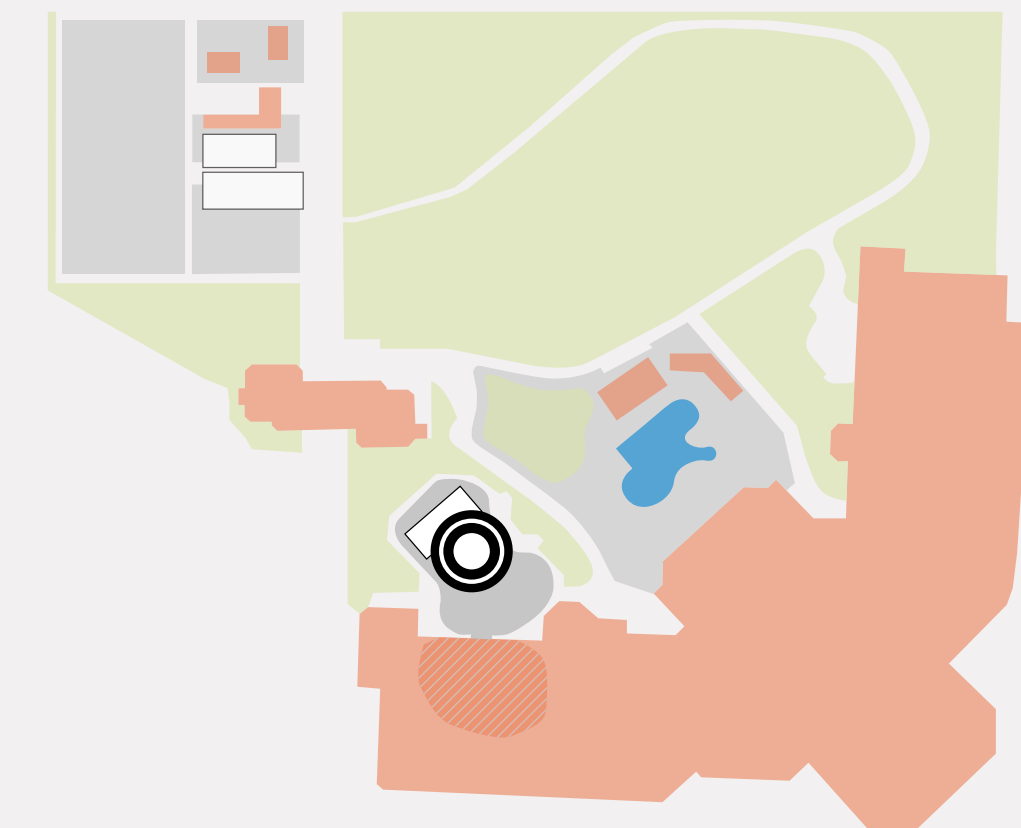


3 | LOCATION OUTDOOR

EVENT TENT 2



- tent area approx. 250 m²
- tent height ca. 3.50 m
- PAX up to approx. 250

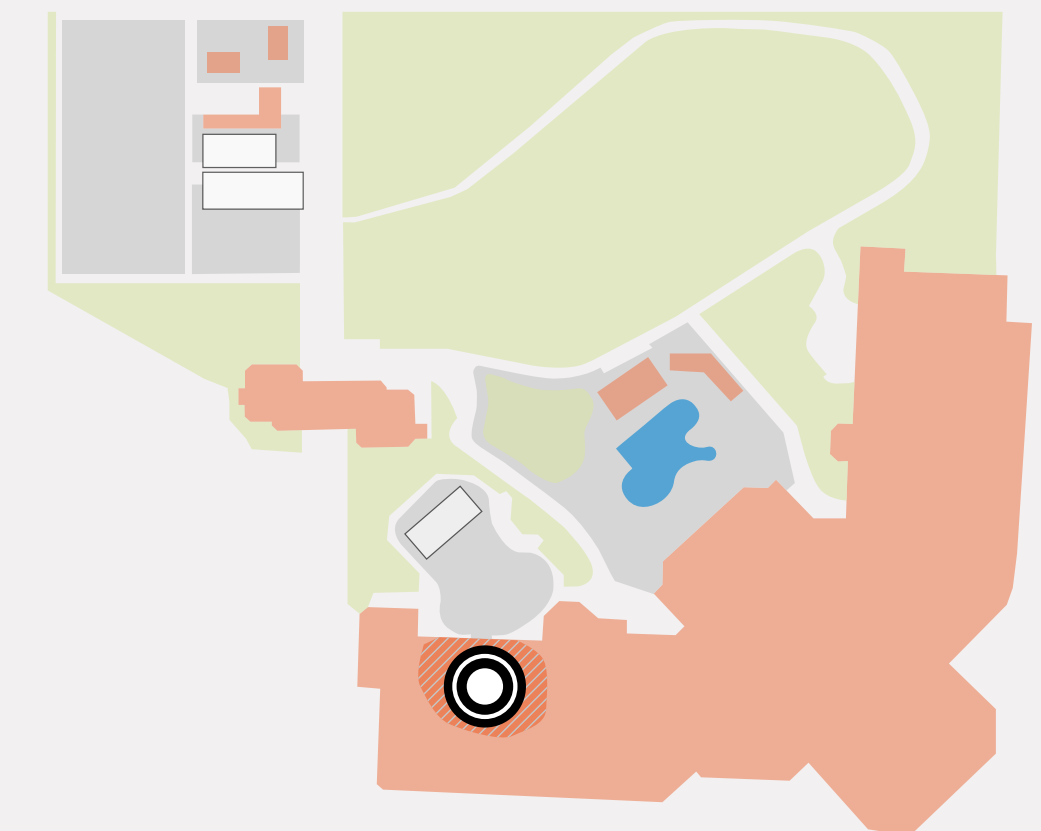


4 | LOCATION OUTDOOR

ICE FIELD



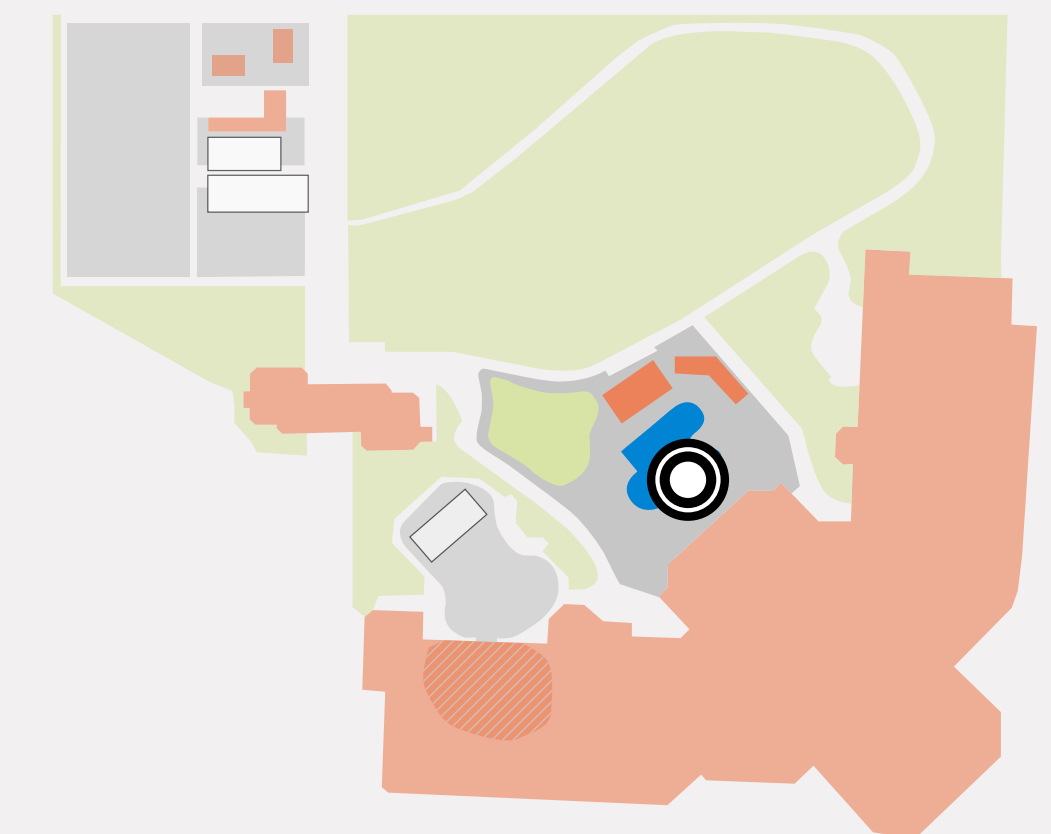
- area approx. 2,000 m²
- PAX up to approx. 2,000
- approx. 5.80 m clear height
- partly roofed



5 | LOCATION OUTDOOR POOL



- area approx. 2,500 m²
- indoor area approx. 100 m²
- PAX up to approx. 250
- pool 1.40 m water depth
- sauna area with 3 saunas
- beverage bar

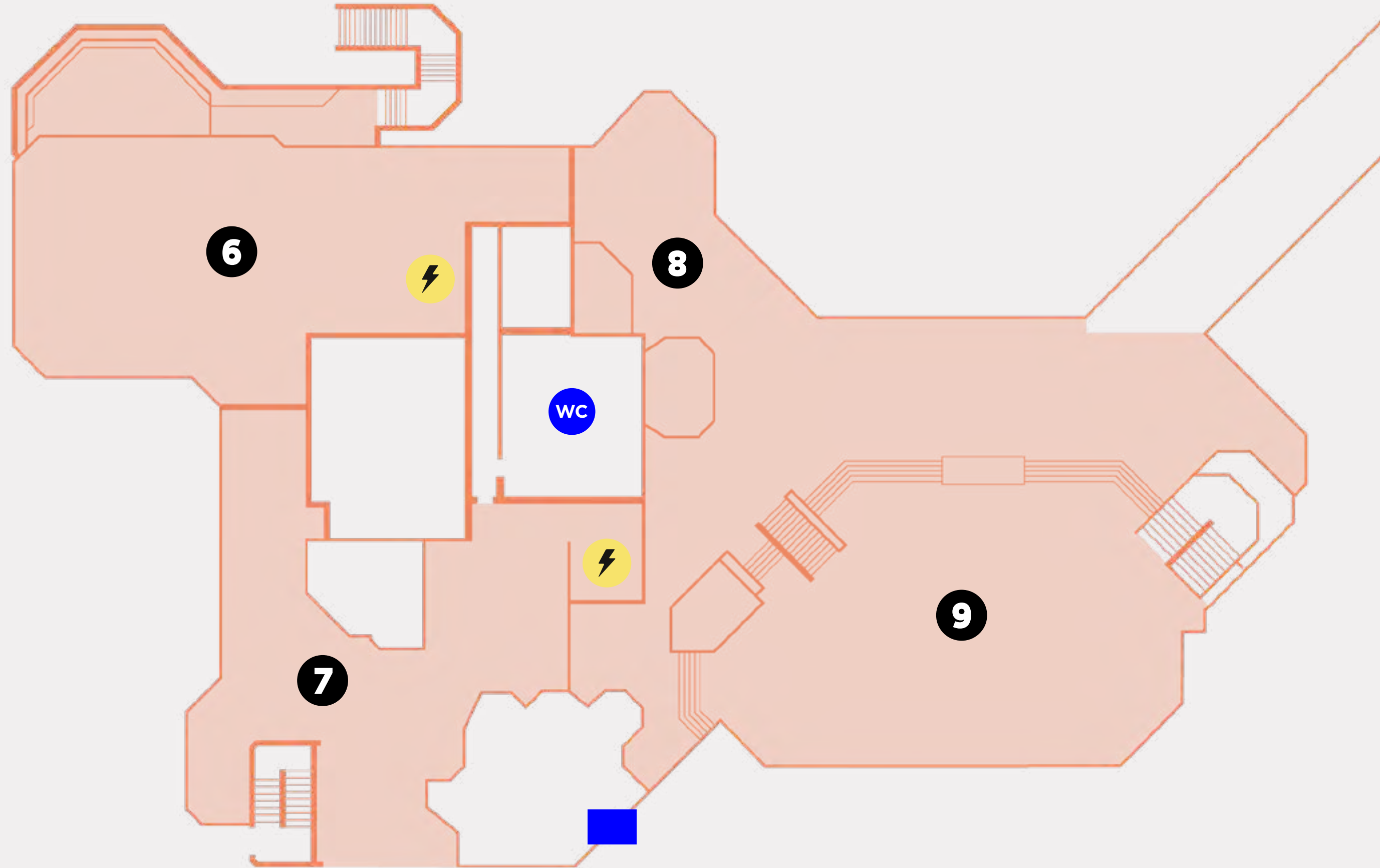


INDOOR







SEZ BERLIN

AREA 6-20

6 – 9 | **LOCATION INDOOR**
FIRST FLOOR



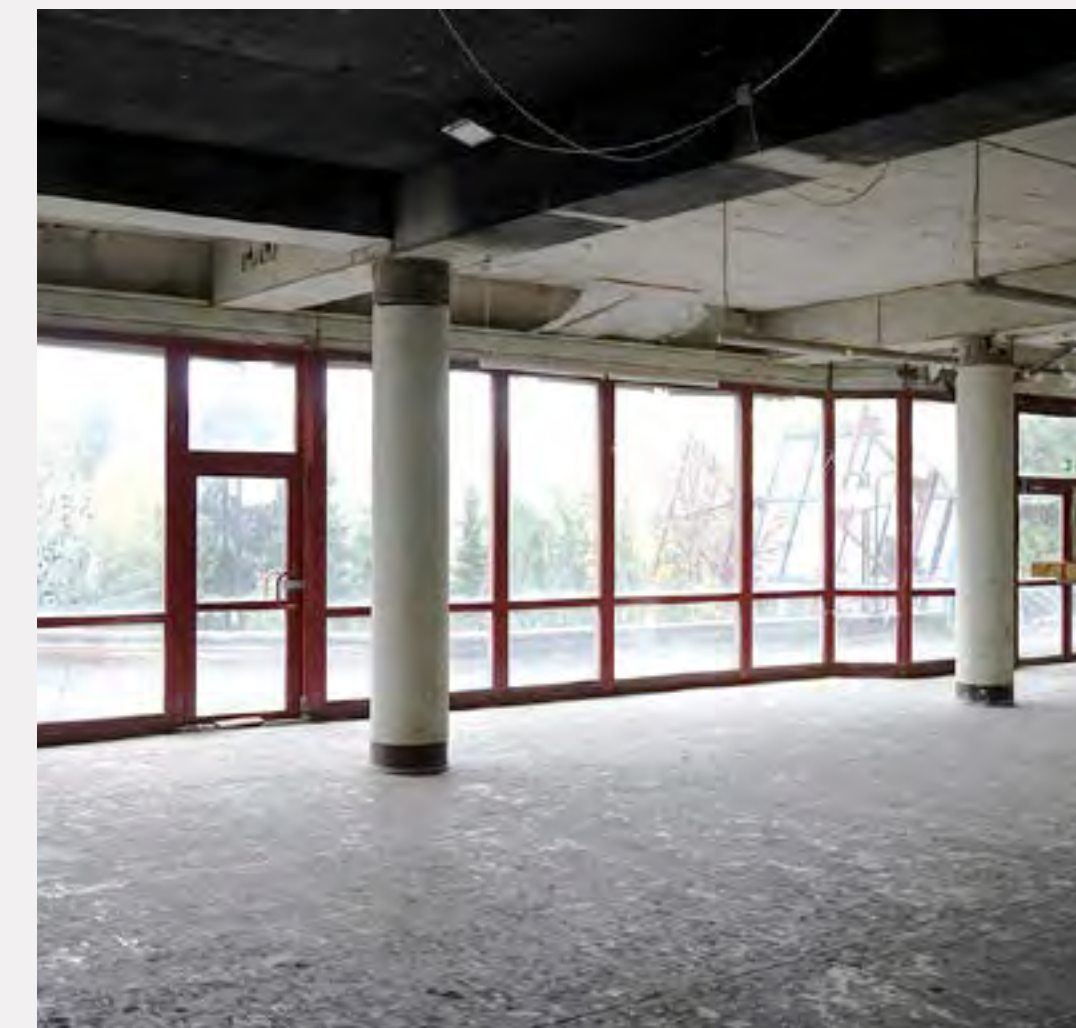
First floor plan

-  Entrance guests
-  16A CEE
-  Crystal restaurant + crystal terrace
-  Bistro
-  Shop & Mocha Bar
-  Gallery

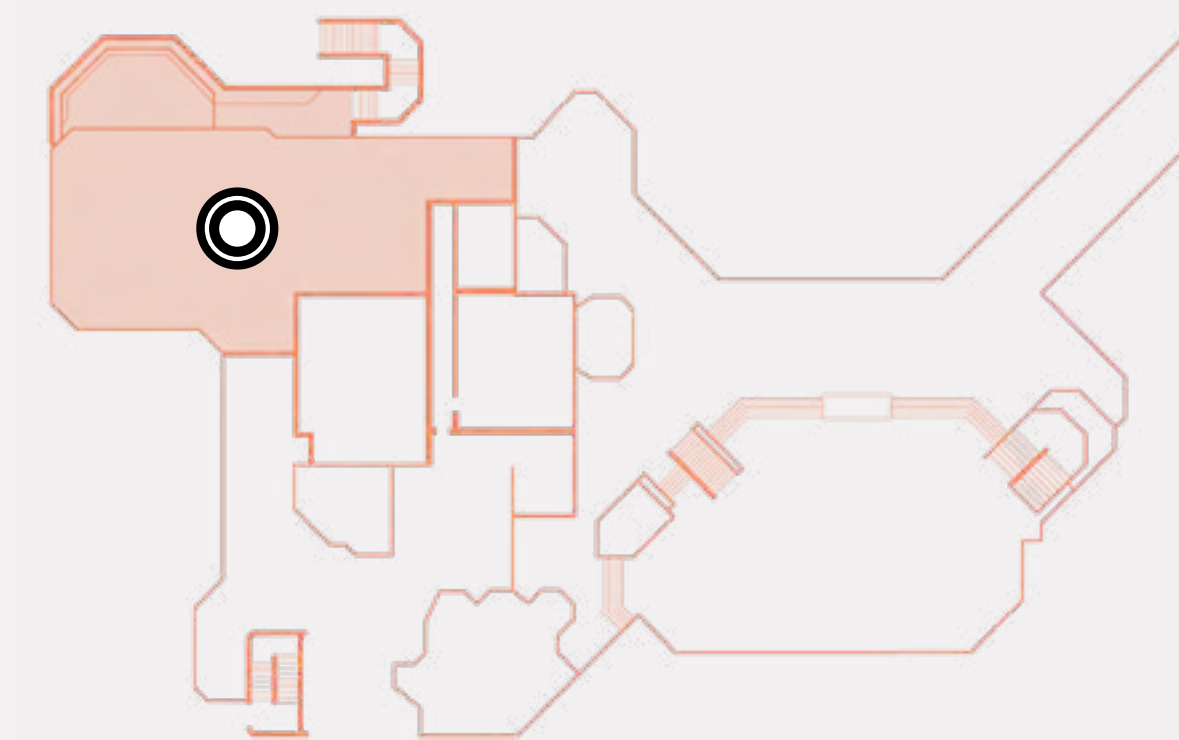
6

LOCATION INDOOR

FIRST FLOOR / CRYSTAL RESTAURANT + CRYSTAL TERRACE



- area about 250 m²
- PAX up to approx. 200
- outdoor terrace
- direct access pool
- direct access ice field



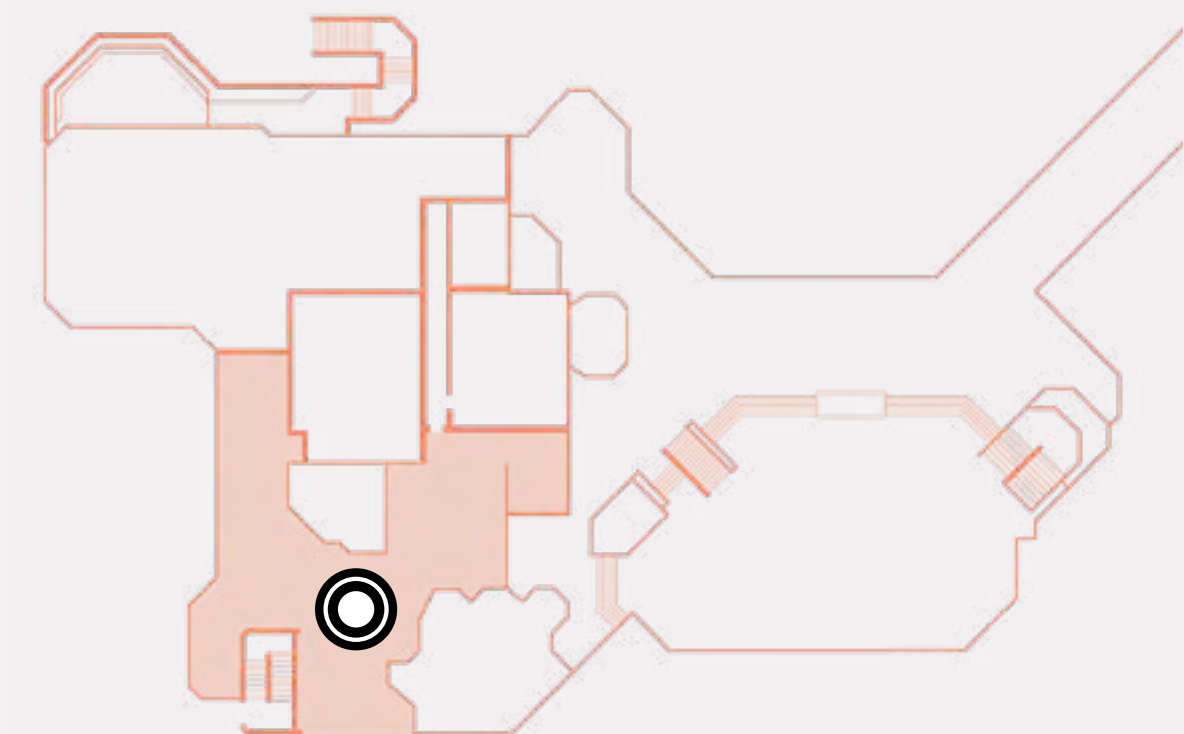
7

LOCATION INDOOR

FIRST FLOOR / BISTRO



- area about 150 m²
- PAX up to approx. 150
- counter available
- direct access Landsberger Allee



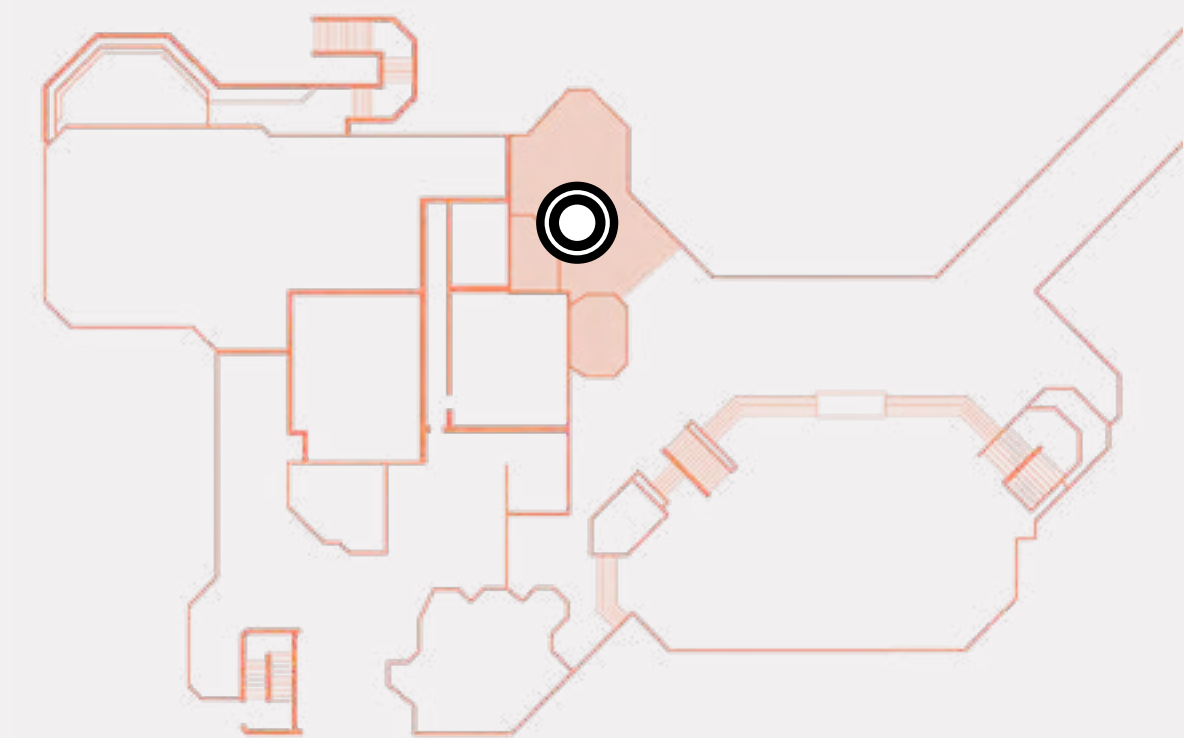
8

LOCATION INDOOR

FIRST FLOOR / SHOP & MOCHABAR



- area about 200 m²
- counter available
- 3.20 m clear height
- 3.50 m room height



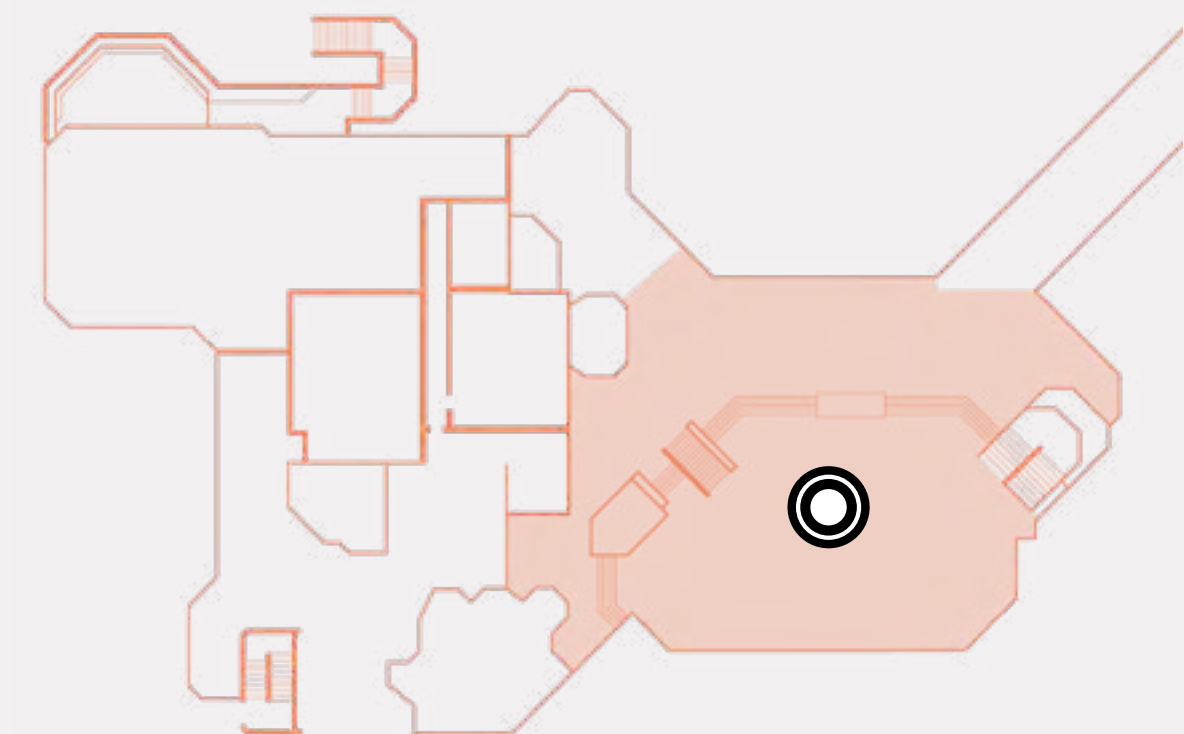
9

LOCATION INDOOR

FIRST FLOOR / GALLERY

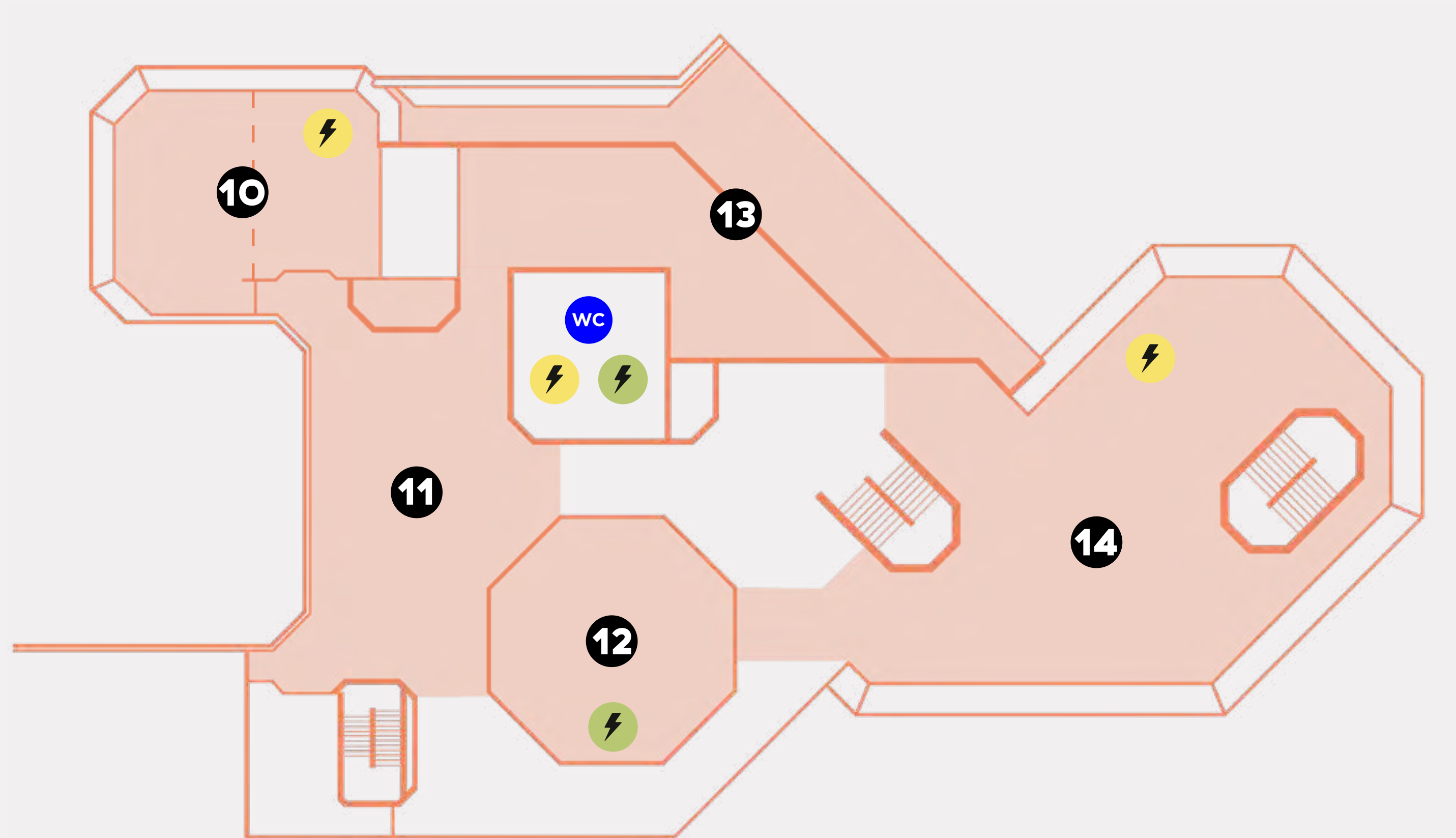


- area approx. 1,000 m²
- exhibition walls
- PAX up to approx. 1,000
- 3.80 m clear height
- 4.45 m room height



10 – 14

LOCATION INDOOR
UPPER FLOOR



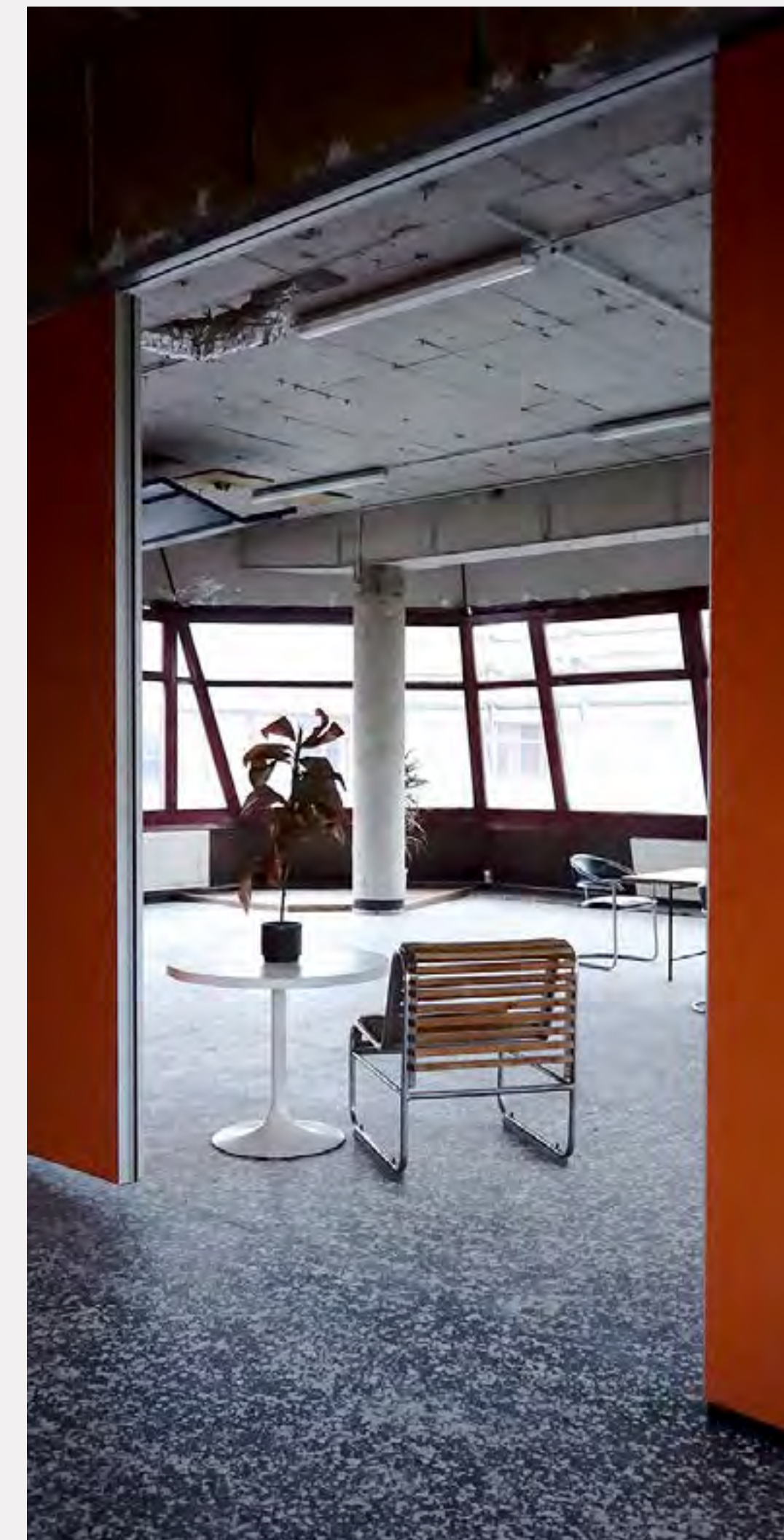
Floor plan upper floor

-  16A CEE
-  32A CEE
- 10** Conference room
- 11** Club
- 12** Studio
- 13** Sauna + sauna terrace
- 14** Large hall

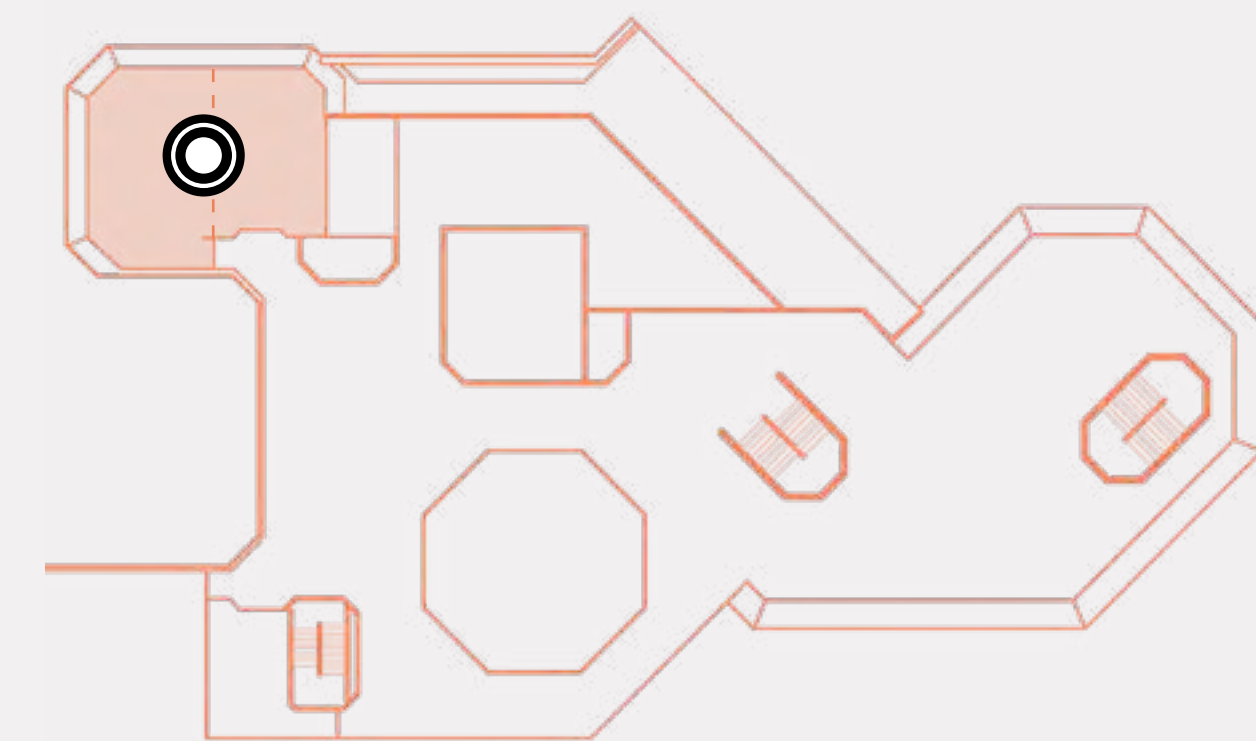
10

LOCATION INDOOR

UPPER FLOOR / CONFERENCE ROOM



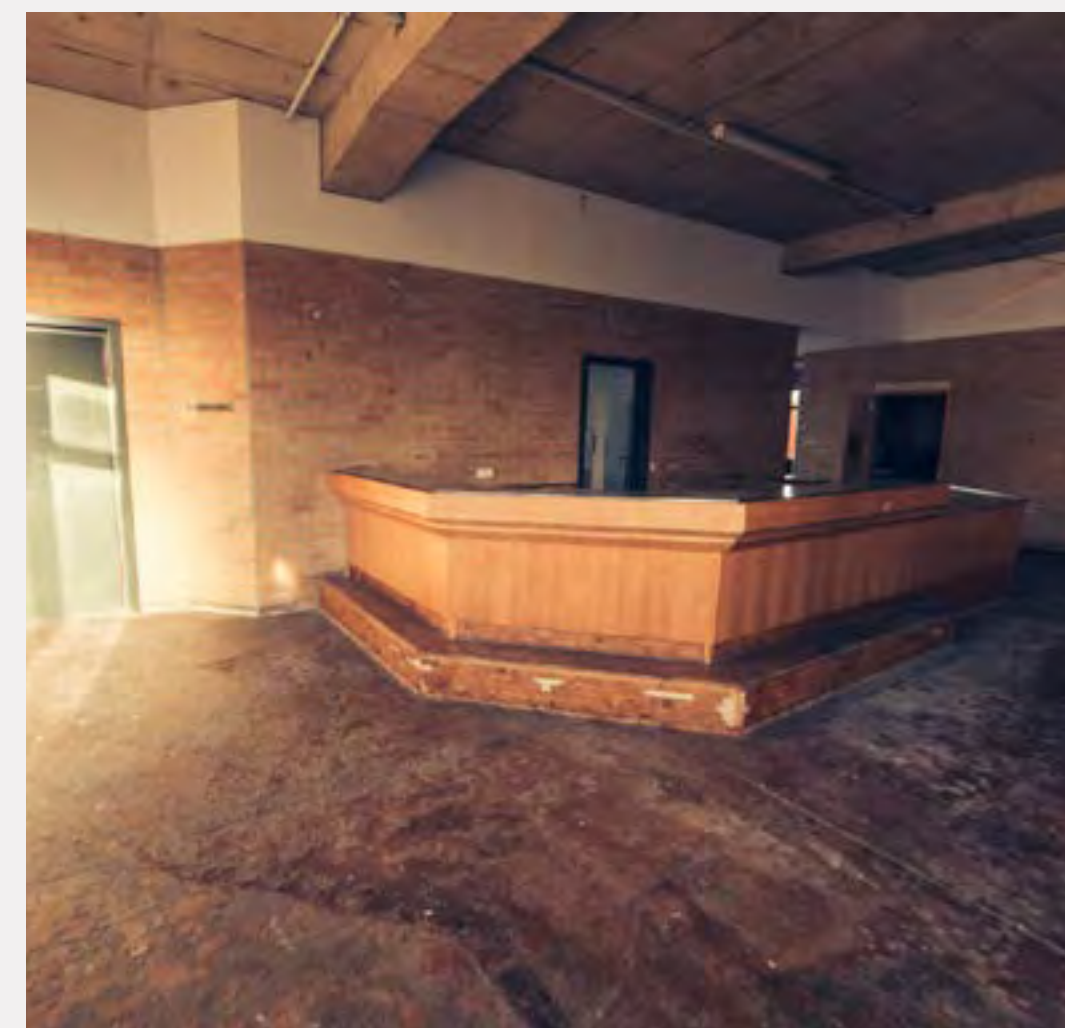
- area approx. 200m²
- partition wall available
- PAX approx. 40 – 50
- 3.50 m clear height
- 3.80 m room height



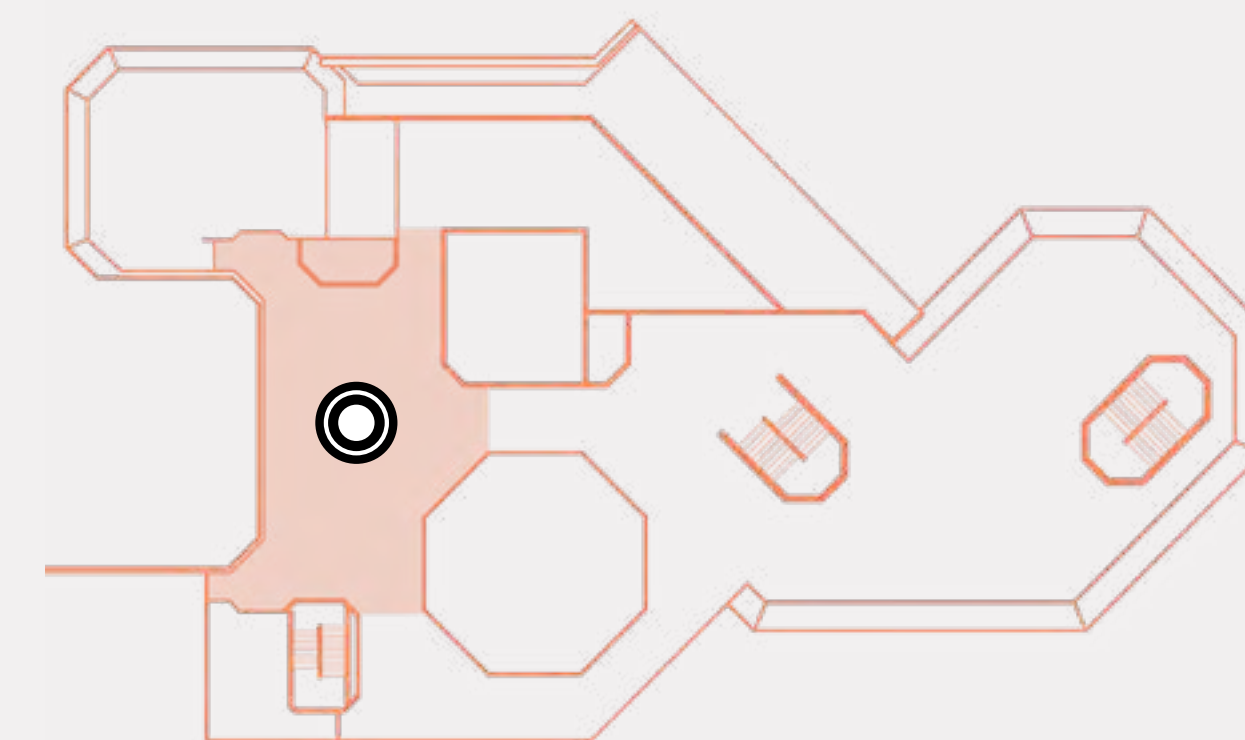
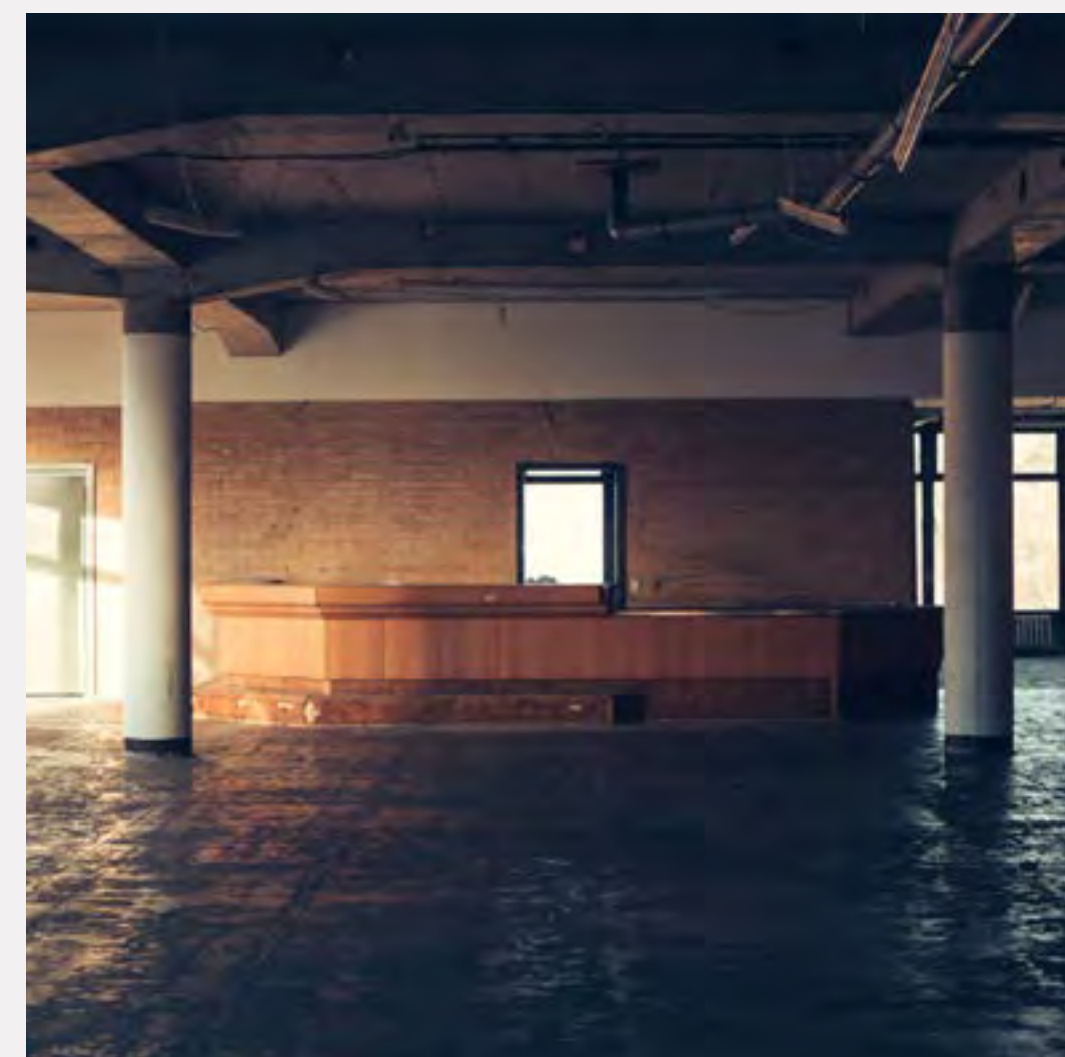
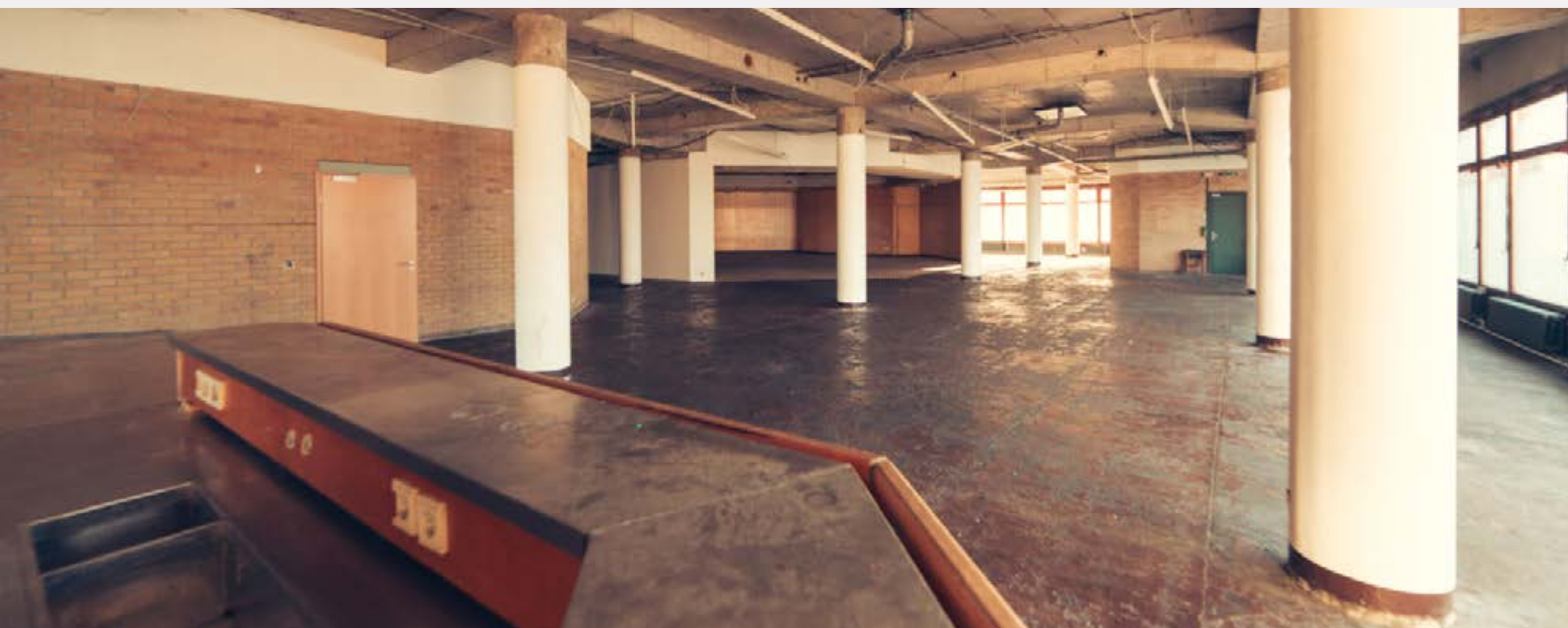
11

LOCATION INDOOR

UPPER FLOOR / CLUB



- area about 500 m²
- counter
- PAX approx. 400
- 3.50 m clear height
- 3.80 m room height



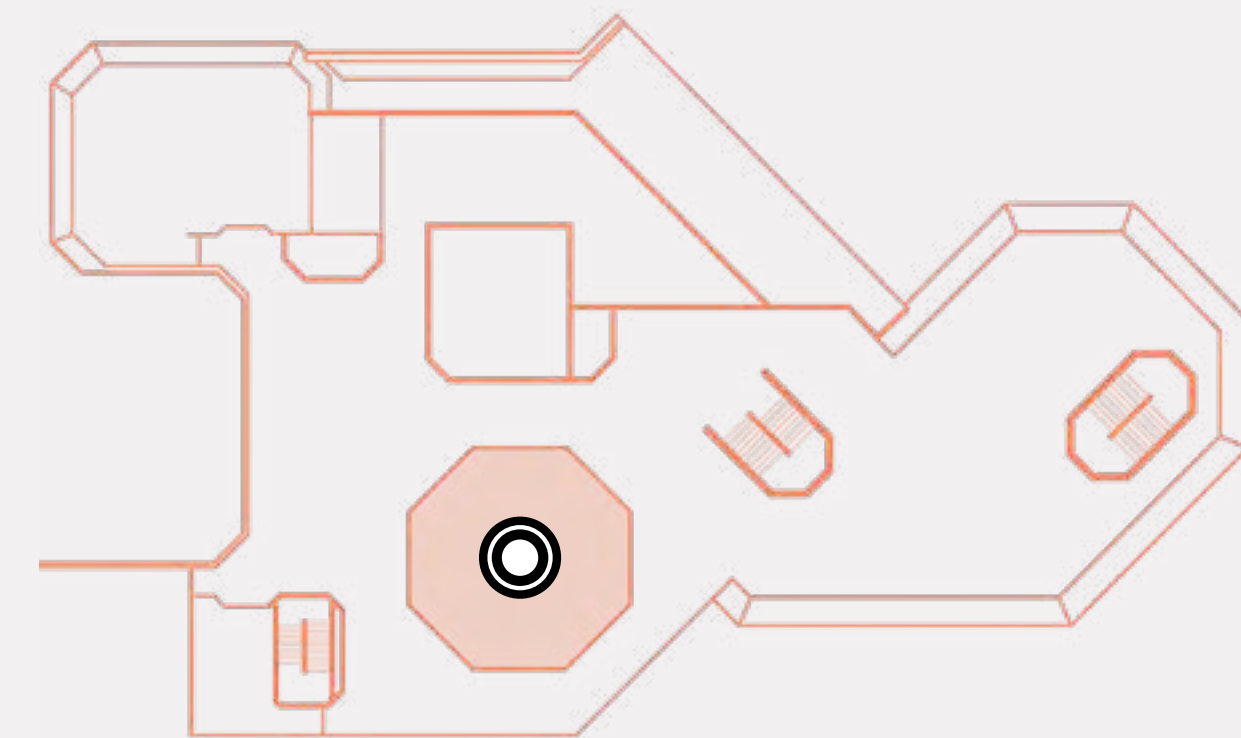
12

LOCATION INDOOR

UPPER FLOOR / STUDIO



- area approx. 200 m²
- partition wall available
- PAX approx. 40 – 50
- 2.95 m clear height
- 3.70 m room height



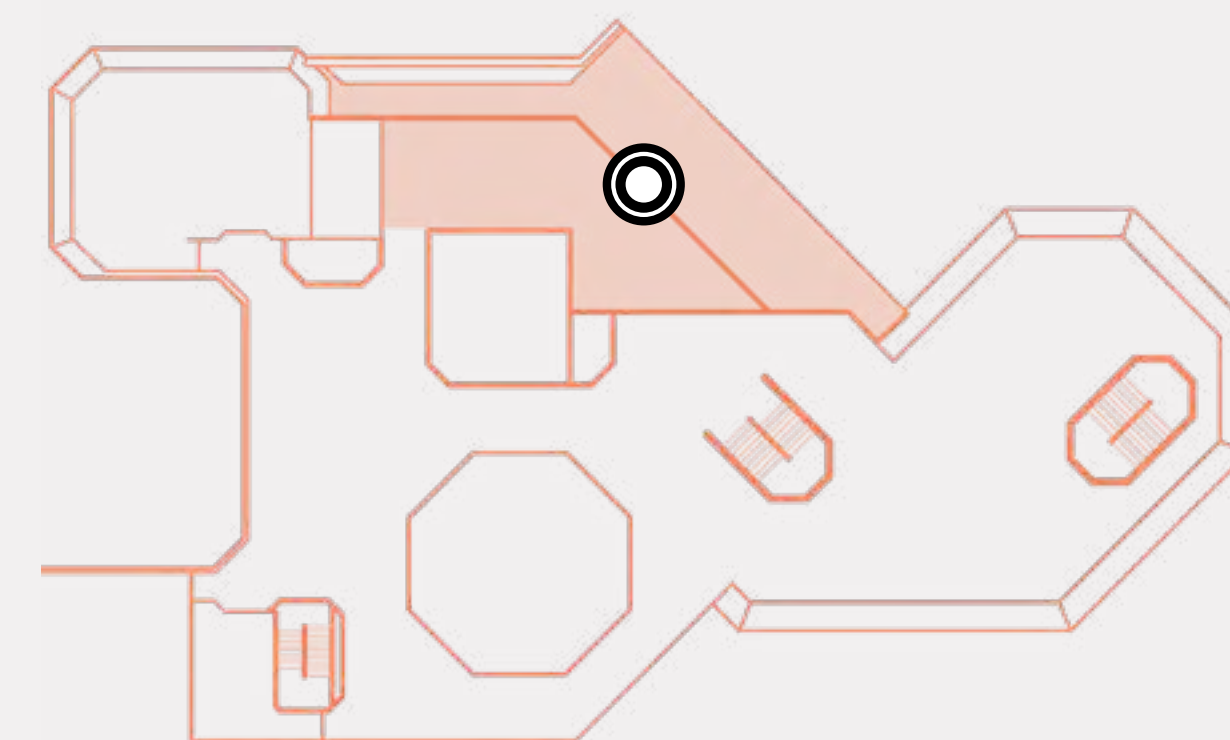
13

LOCATION INDOOR

UPPER FLOOR / SAUNA + SAUNA TERRACE



- area about 250 m²
- access sauna terrace
- 3.50 m clear height
- 3.80 m room height



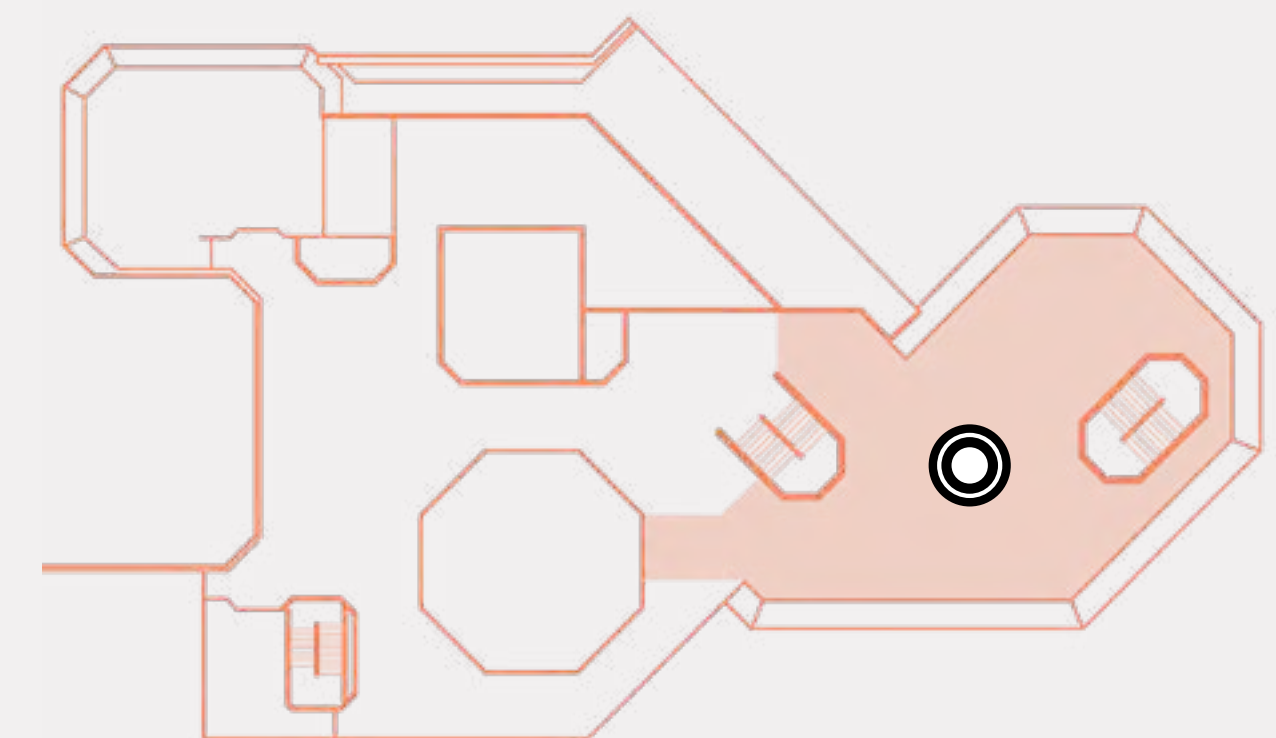
14

LOCATION INDOOR

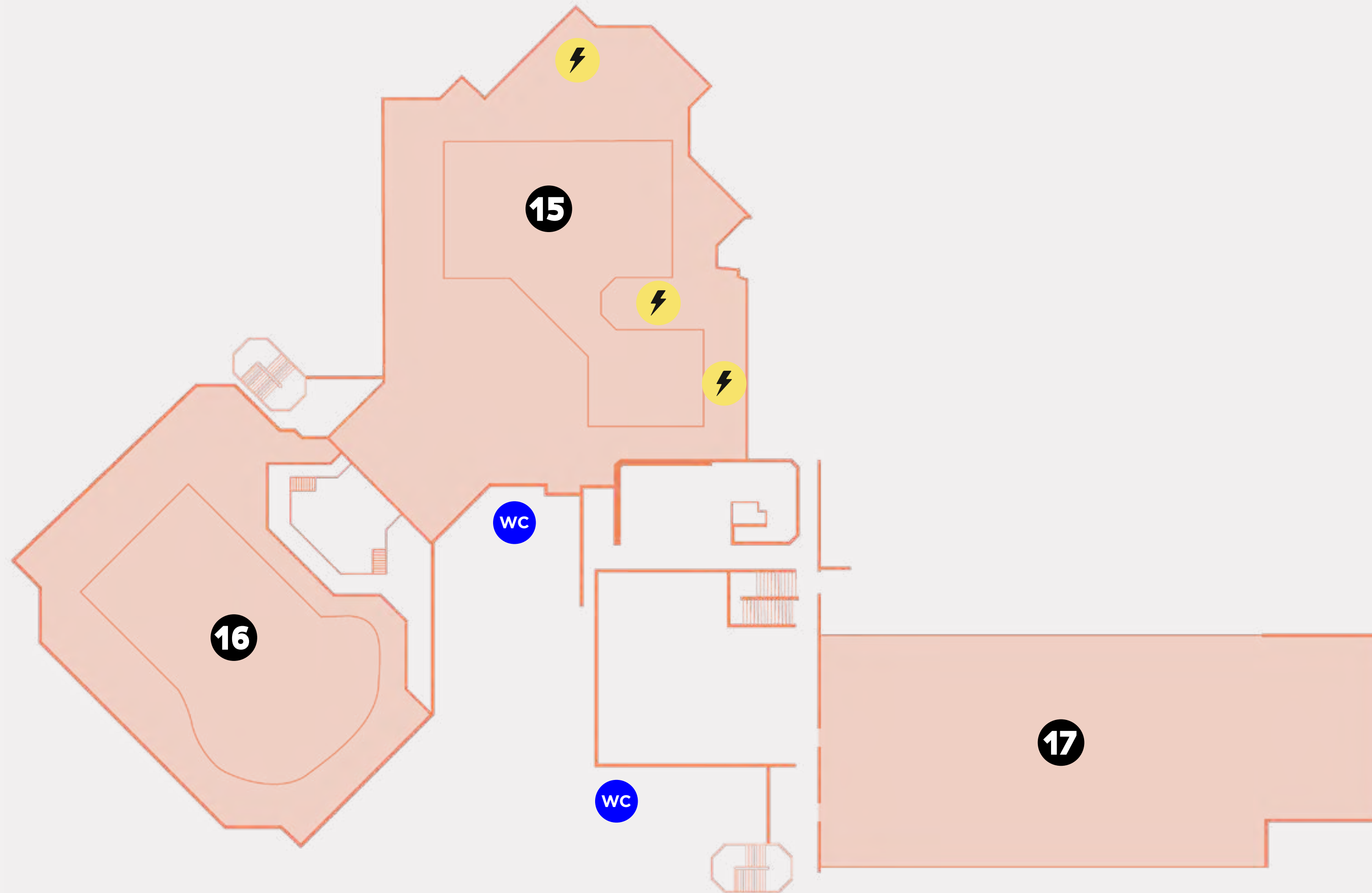
UPPER FLOOR / LARGE HALL



- area about 800 m²
- PAX up to approx. 700
- 3.10 m clear height
- 3.80 to 5.50 m room height



15 – 17 | **LOCATION INDOOR**
FIRST FLOOR / SPORTS AREA



Floor plan sports area

-  16A CEE
- 15** Multisport hall
- 16** Badminton hall
- 17** Tennis hall

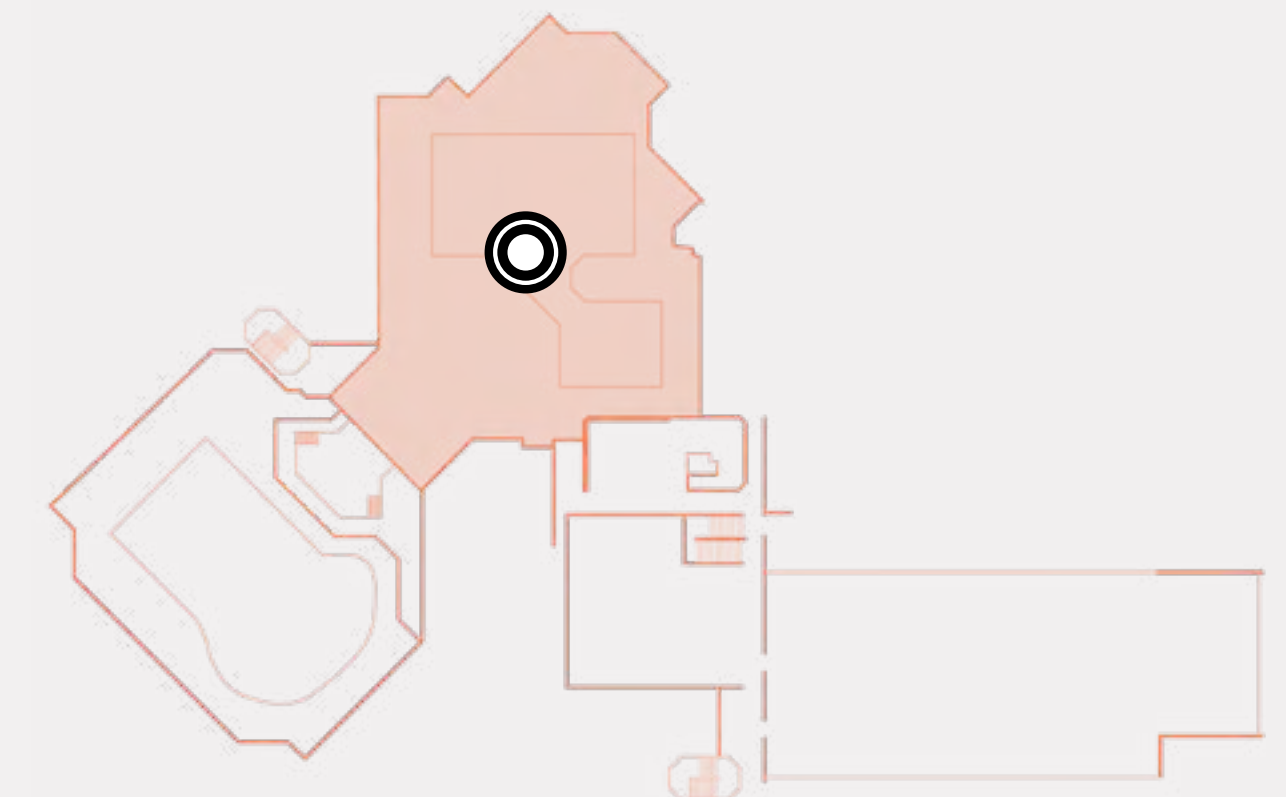
15

LOCATION INDOOR

FIRST FLOOR / MULTISPORT HALL



- area approx. 2,000 m²
- free seating
- PAX up to approx. 2,000



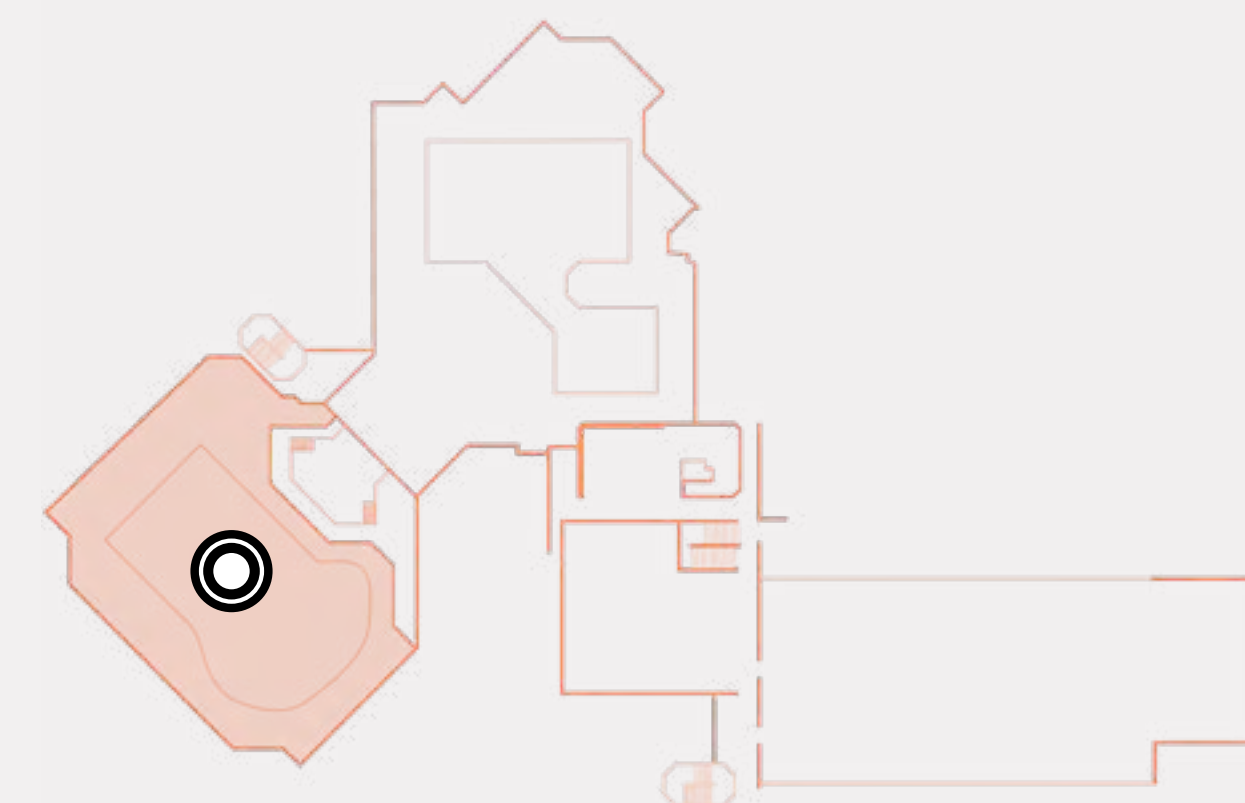
16

LOCATION INDOOR

FIRST FLOOR / BADMINTON HALL



- area approx. 1,500 m²
- free seating
- PAX up to approx. 800



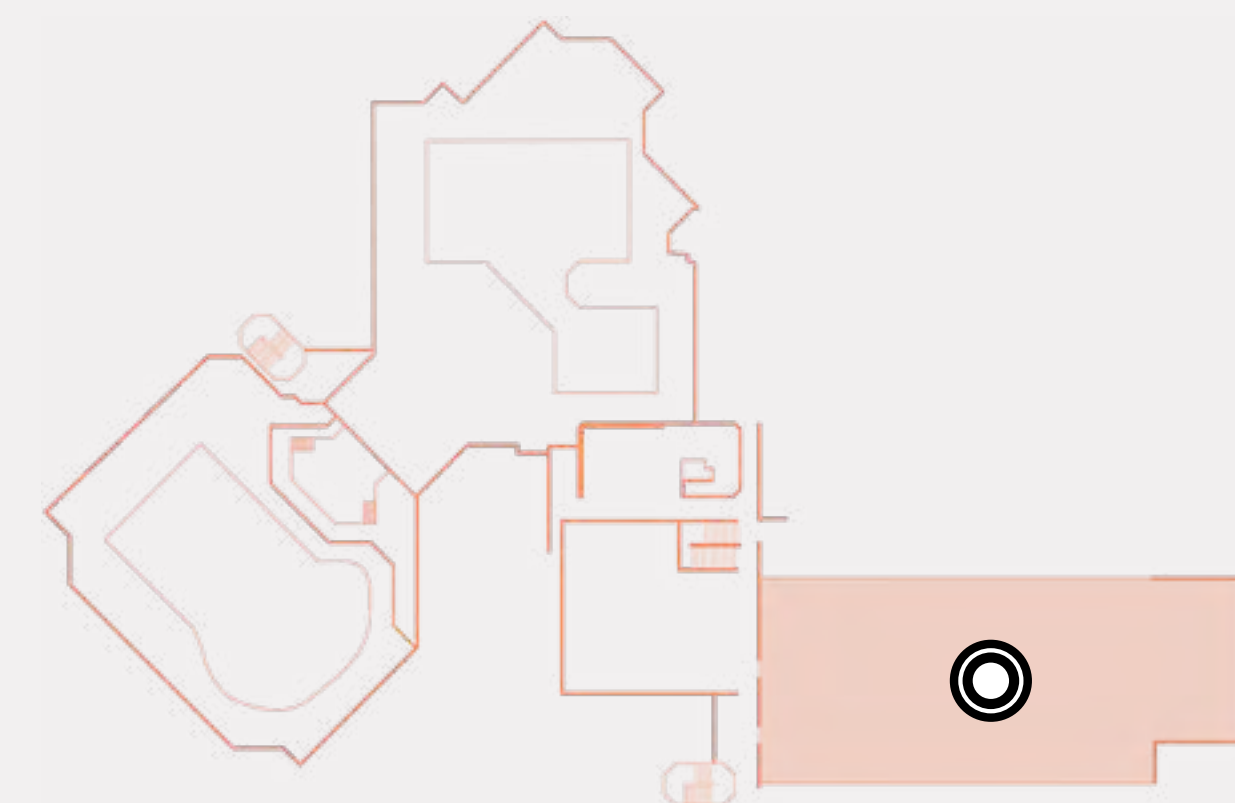
17

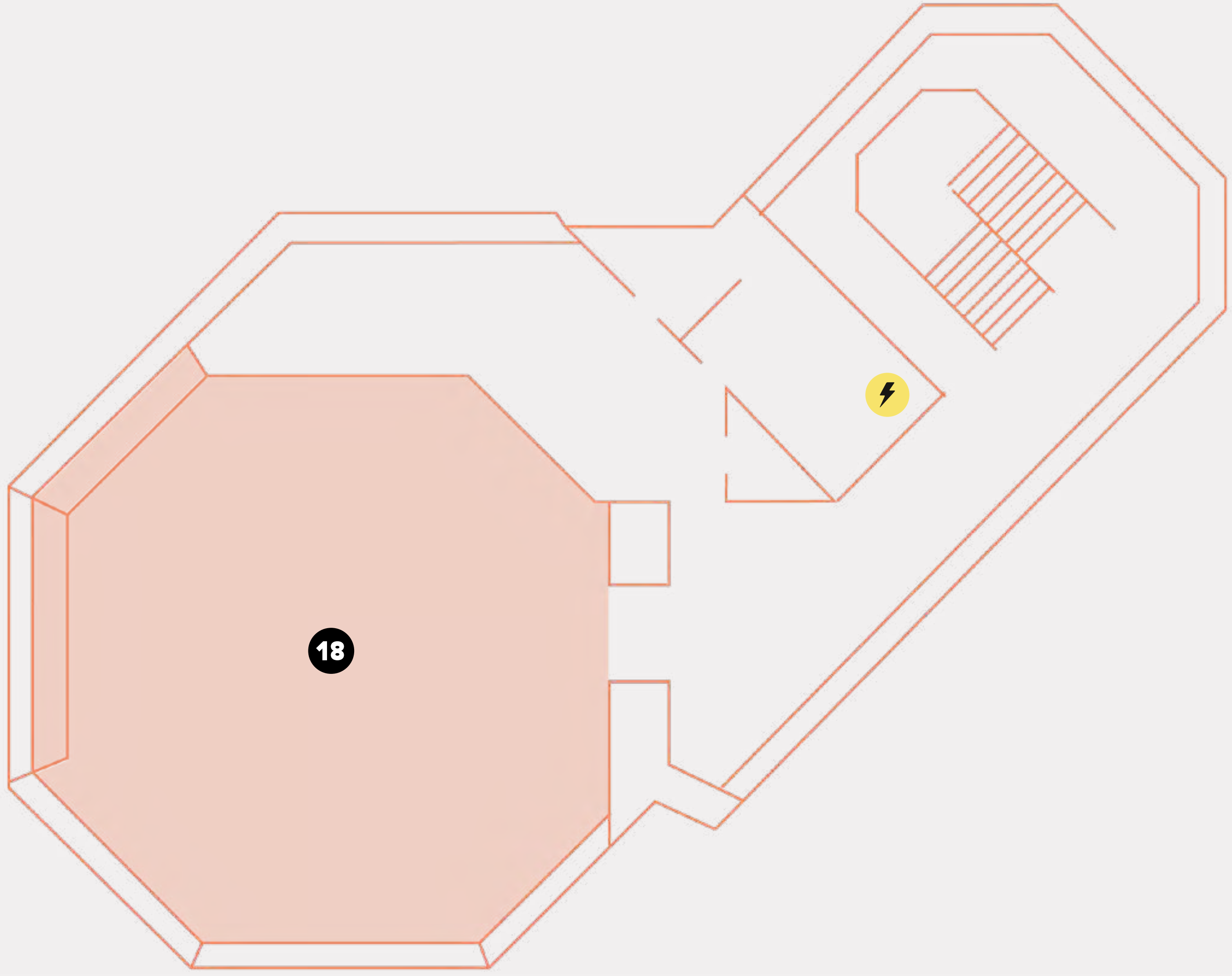
LOCATION INDOOR

FIRST FLOOR / TENNIS HALL





- area approx. 1,800 m²
- free seating
- PAX up to approx. 1,000





Floor plan attic

 16A CEE

 Martial arts studio

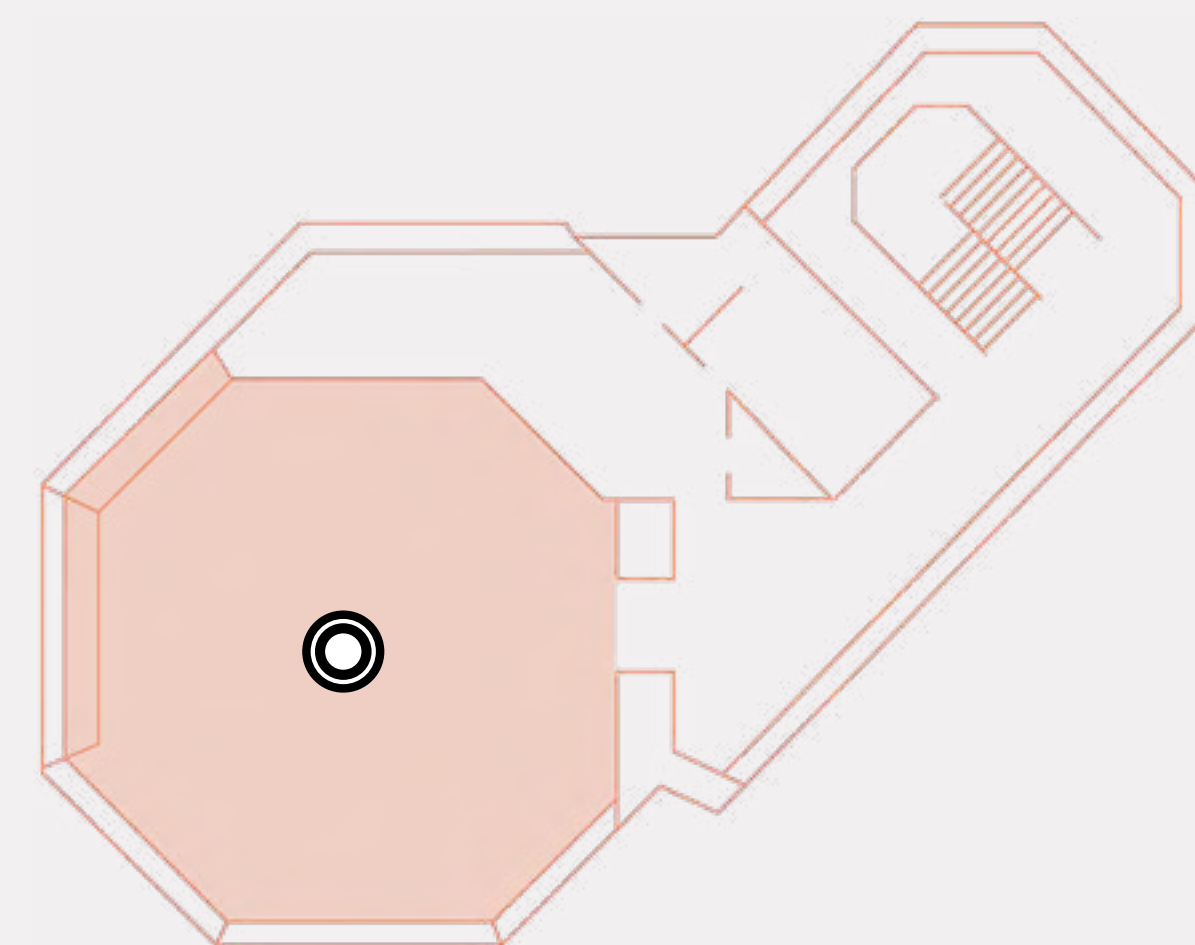
18

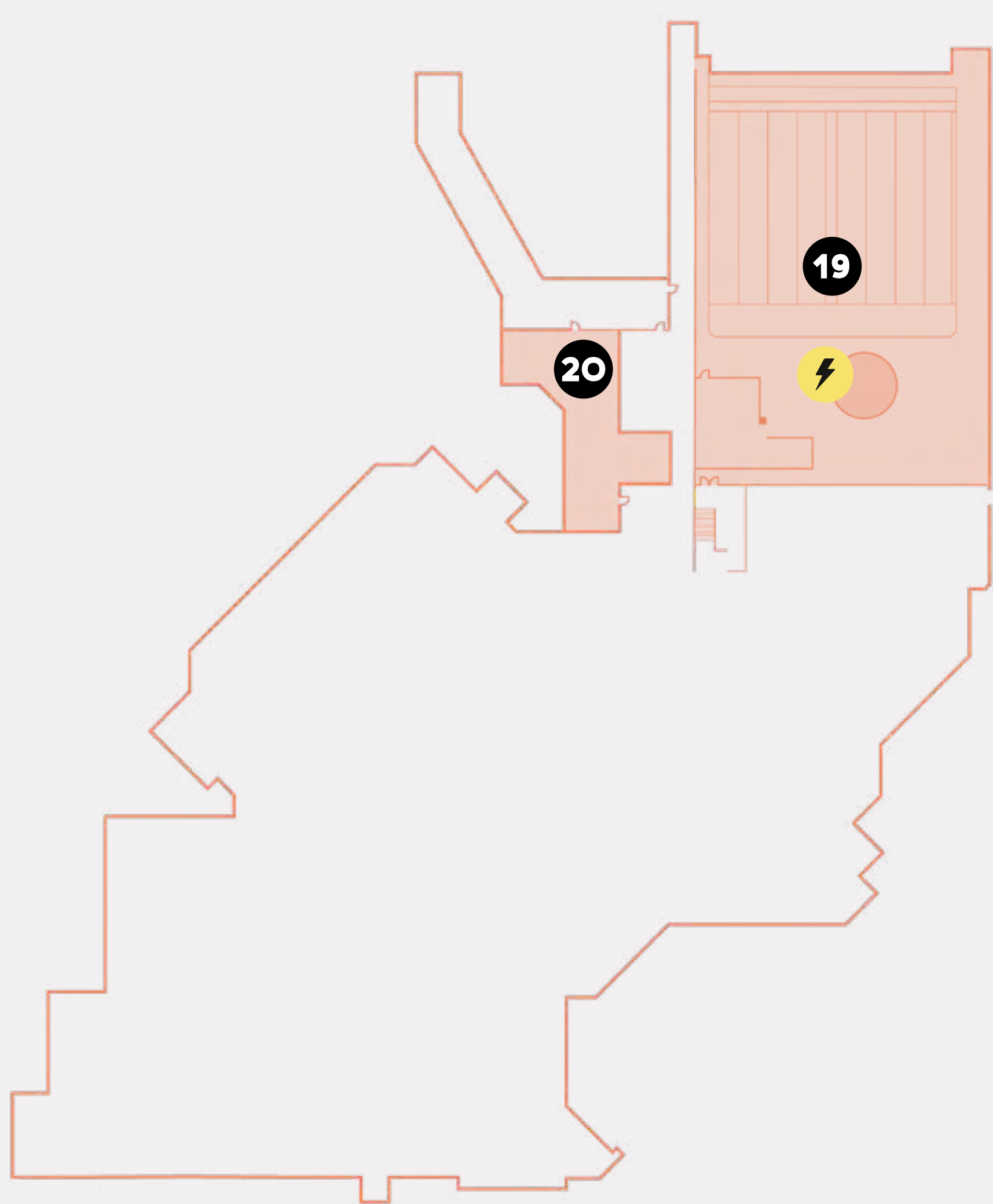
LOCATION INDOOR

ATTIC / MARTIAL ARTS STUDIO






- area approx. 150 m²
- PAX up to approx. 30
- 3 m clear height
- free seating





Grundriss KG

-  16A CEE
-  Bowling alley
-  Smoking lounge

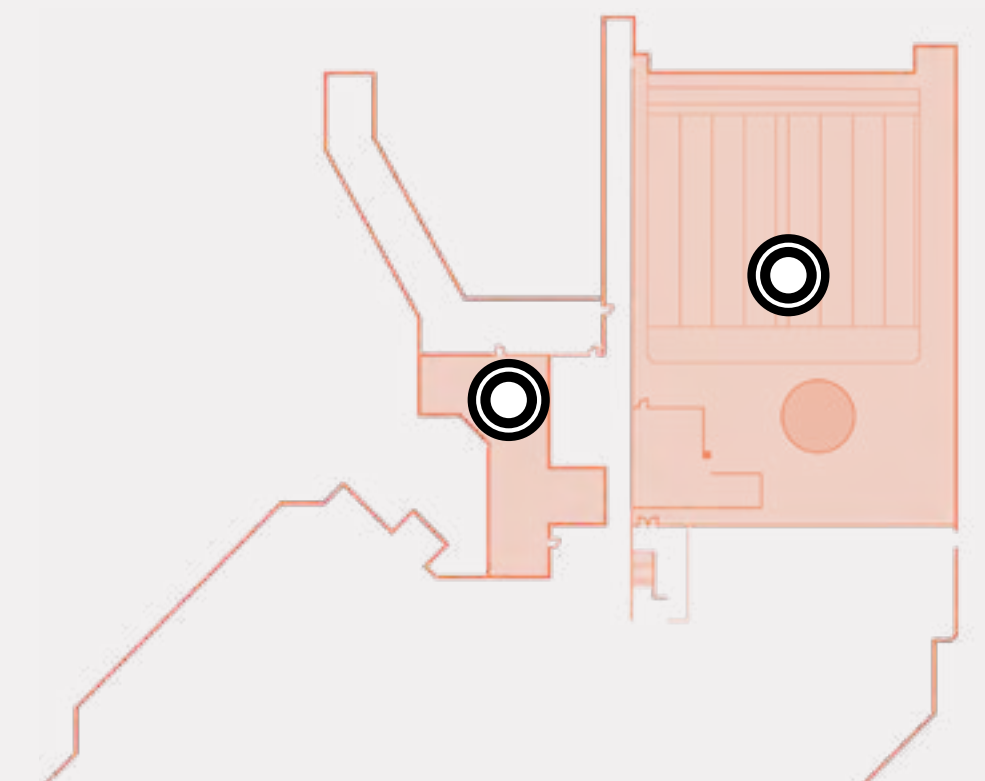
19 + **20**

LOCATION INDOOR

BASEMENT / BOWLING ALLEY & SMOKING LOUNGE

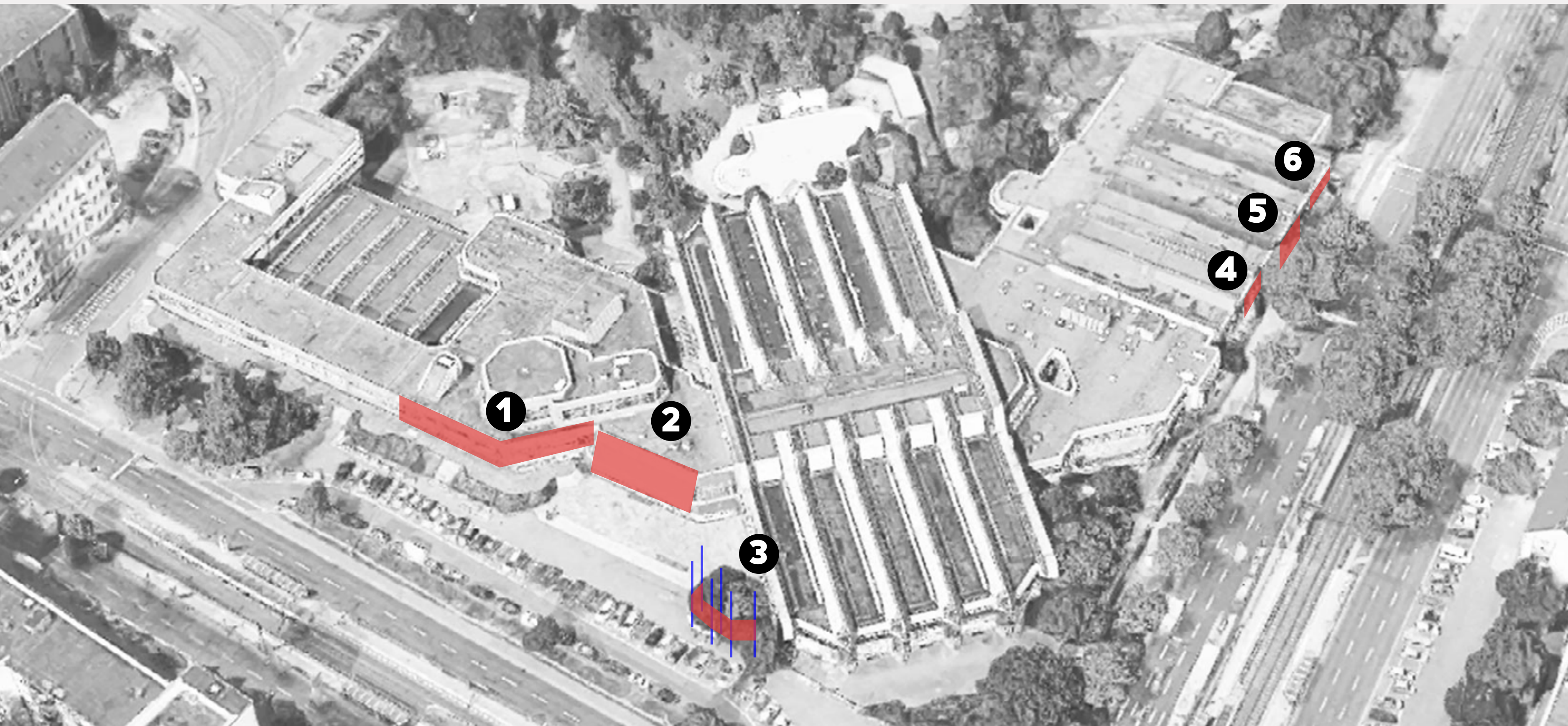


- area about 1,650 m²
- PAX up to approx. 500
- 3,80 m clear height
- 3,50 m room height



LOCATION

EVENT – ADVERTISING SPACE

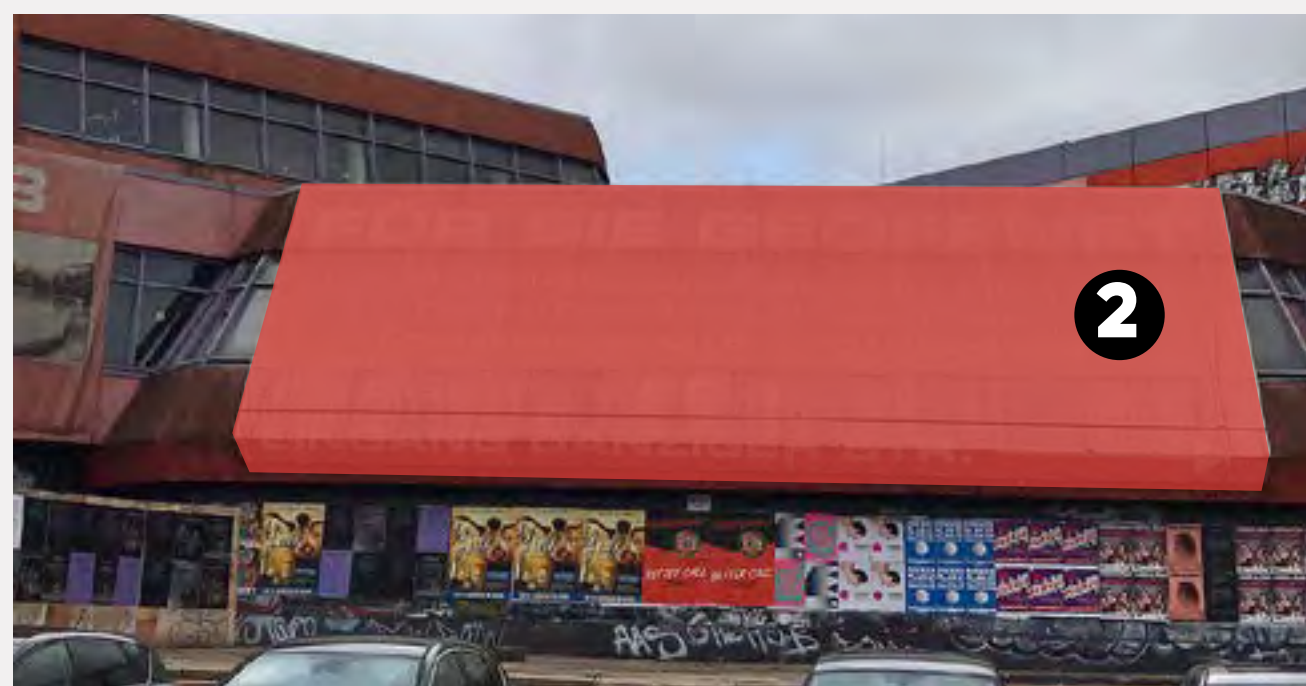


We offer

Banner layout
Print production
Assembly
Licensing

LOCATION

EVENT – ADVERTISING SPACE



1 5.5 m x 5 - 50 m

2 7 m x 19 m



3 1.5 m x 7 m



4 1.5 m x 3.65 m



5 2.8 m x 6.6 m



6 1.4 m x 7.6 m

THANKS.

We are looking forward to your inquiries

sez@glut.berlin



MICHEL GEHRING



CARLA DE OLIVEIRA



LAURA SCHULZ



GLUT Berlin UG + Co. KG
Königsstadt-Brauerei Haus F
Straßburger Str. 55
10405 Berlin

Managing Director:
Michel Gehring

Phone +49.(0)30.209 16 46-0

Fax +49.(0)30.209 16 46-29

mail@glut.berlin

www.glut.berlin

© Factsheet status as of 12.04.2021

All contents and ideas in this concept are property of glut berlin. Reproduction, distribution or publication of the self-portrayal is not permitted without the owner's consent.